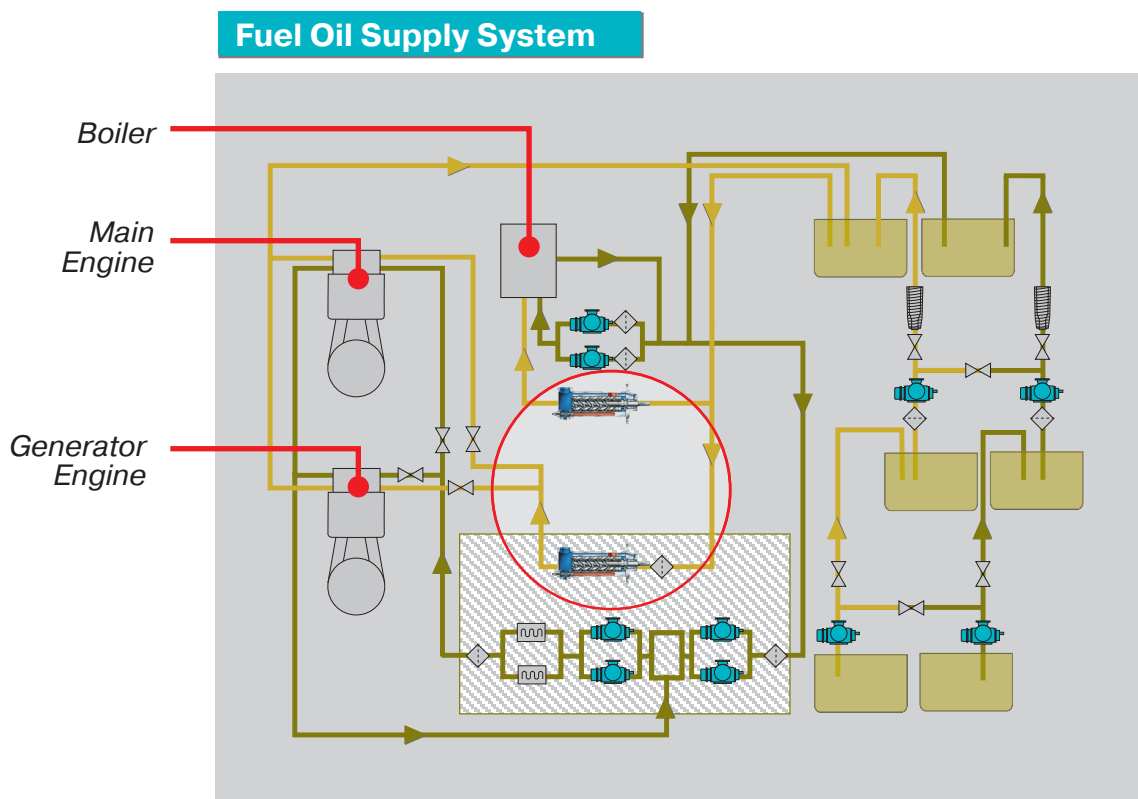




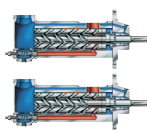
Leistritz Screw Pumps for Low Sulphur Fuel Oil (LSFO)

New Environmental Regulations for Fuel Oil Since 1st January 2010!

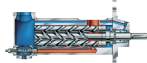
- The sulphur content of marine fuels used by ships in EU ports should be maximum 0.1 % by mass according to EU Directive 2005/33/EC



oversimplified illustration



Leistritz DO Supply Pump L3MF



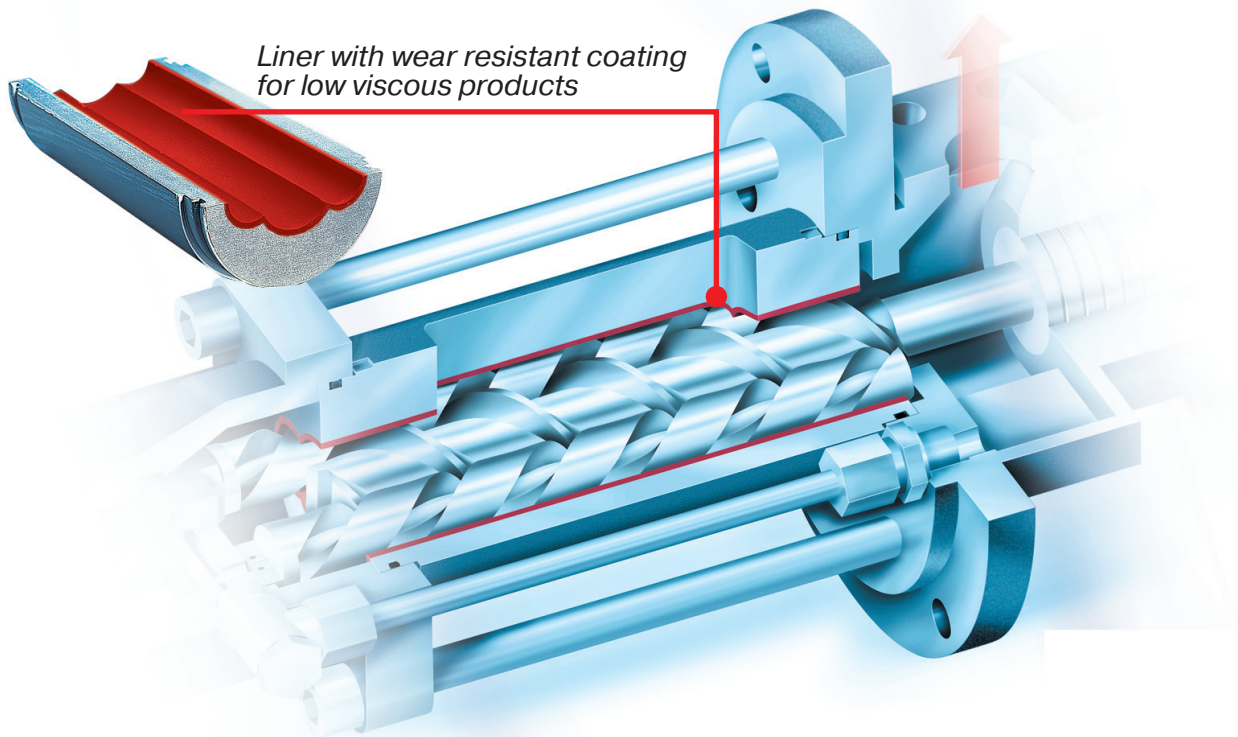
Leistritz DO Boiler Supply Pump L3MF



Other Leistritz Screw Pumps



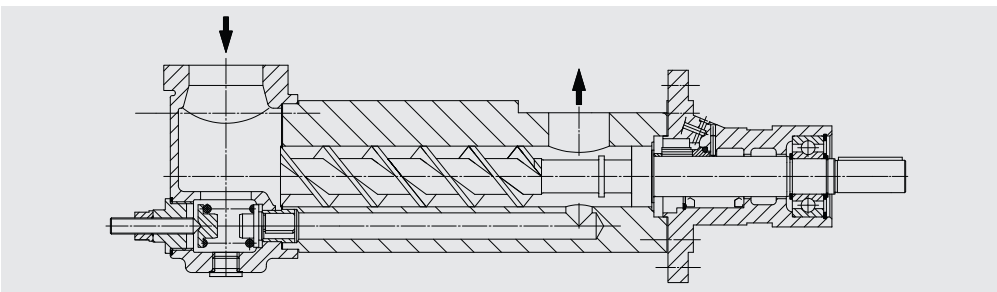
L3MF



Performance Data

Application:	Supply pump for diesel engines and boilers
Fluid:	Low sulphur fuel oil (LSFO)
Viscosity:	Down to 1,5 cSt. @ 40° Temperature
Pressure:	Up to 30 bar
Pump Type:	L3MF-.../...-AFOKUI-G
Material:	GGG40 (0.7040) with wear resistant coating of pump liner

Sectional Drawing



LEISTRITZ PUMPEN GMBH

P.O. Box 30 41 · D-90014 Nuremberg · Markgrafenstrasse 29-39 · D-90459 Nuremberg
Phone: +49 9 11 / 43 06 - 0 · Fax: +49 9 11 / 43 06 - 490 · E-Mail: pumps@leistritz.com

■ www.leistritz.com