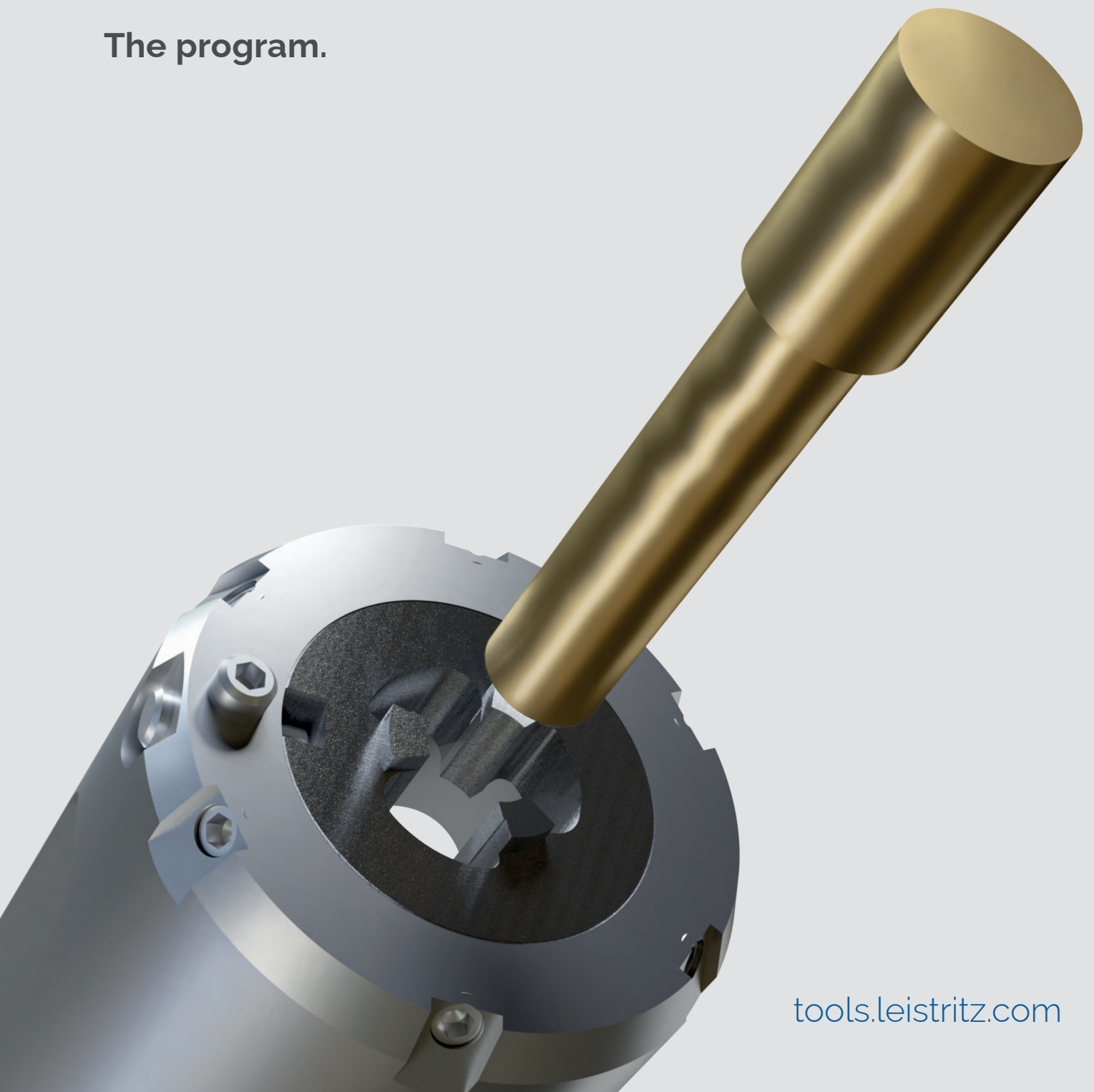


Leistritz
HIGH PRECISION TOOLS

Leistritz OverCut. Stability as standard.

The program.



tools.leistritz.com

UP TO 6X FASTER.

Highly effective Leistriz OverCut tool system for axial overcutting of elongated components.

By arranging at least three cutting edges on the diameter of the workpiece, the Leistriz OverCut not only solves the problem of radial deflection. At the same time, significantly higher feed rates can be achieved, which considerably reduces the cycle time.

- 5x longer tool life possible
- Ideal for machining diameters with tolerances of $\pm 0.03\text{mm}$
- Surfaces below $8\mu\text{m}$ in Rz value
- Interchangeable cutting inserts
- Different diameters can be used in one basic body
- Higher surface quality
- Optionally with internal coolant supply



Leistriz OverCut Cutting inserts 03

Cutting inserts *Leistriz OverCut* 04
■ For steel

Cutting inserts *Leistriz OverCut* 13
■ For stainless steel

Cutting inserts *Leistriz OverCut* 21
■ For aluminium alloys

Cutting inserts *Leistriz OverCut* 29
■ For brass leaded

Cutting inserts *Leistriz OverCut* 33
■ For plastics

Leistriz OverCut Holder 41

Leistriz OverCut Holder cylindrical 43

Leistriz OverCut Holder HSK-C (DIN 69893-1) HSK-E (DIN 69893-5) 44

Leistriz OverCut Holder Polygon shaft taper ISO 26623 45

Leistriz OverCut Holder SK (DIN 2080) 46

Leistriz OverCut Holder 4 Edges 47

Leistriz OverCut Holder Machine specific 48

Leistriz OverCut Technical informations 49

Leistriz OverCut Cutting inserts.



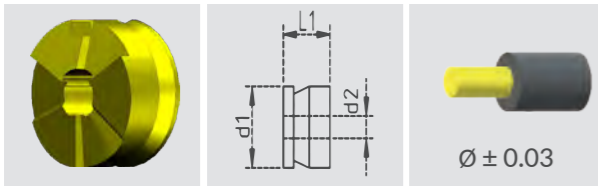
Tool type	Size	No. cutting edges	Material
LKOC	S	3	A
Leistriz OverCut Cutting inserts	Ø Range XS 1.5-5.0mm S 3.0-8.0mm M 3.0-12.0mm L 6.0-20.0mm	Versions 3 4*	A brass B aluminium C cast iron* D cast steel* E steel F stainless steel G plastics H titanium*

Length	to be produced Ø d2	Version transition	Size transition	Cooling
A	0 2 1 0	B	0 4 0	A
A normal B short* C long*	Example: Work piece Ø 2.10 mm	A without B Radius C Chamfer	Example: Radius 0.40 mm	A external B special*

* Only available in conjunction with a custom fitting

Cutting inserts Leistriz OverCut for stainless steel

Blade type XS - 3 cutting edges - external cooling - coated - metric - right hand cutting

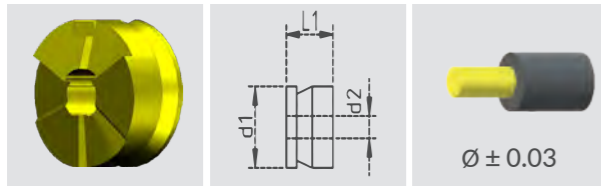


	Description	d1	d2	L1	Chamfer	Radius	Tooth	ap max.	Order-No.
without transition	LKOC XS 3FA0150A000A	12.00	1.50	10.00	--	--	3	1.00	10080874
	LKOC XS 3FA0200A000A	12.00	2.00	10.00	--	--	3	1.00	10080875
	LKOC XS 3FA0250A000A	12.00	2.50	10.00	--	--	3	1.00	10080876
	LKOC XS 3FA0300A000A	12.00	3.00	10.00	--	--	3	1.50	10080877
	LKOC XS 3FA0350A000A	12.00	3.50	10.00	--	--	3	1.50	10080878
	LKOC XS 3FA0400A000A	12.00	4.00	10.00	--	--	3	1.50	10080879
	LKOC XS 3FA0450A000A	12.00	4.50	10.00	--	--	3	2.50	10080880
	LKOC XS 3FA0500A000A	12.00	5.00	10.00	--	--	3	2.50	10080881
Radius transition	LKOC XS 3FA0150B020A	12.00	1.50	10.00		0.2	3	1.00	10080882
	LKOC XS 3FA0200B020A	12.00	2.00	10.00		0.2	3	1.00	10080883
	LKOC XS 3FA0250B040A	12.00	2.50	10.00		0.4	3	1.00	10080884
	LKOC XS 3FA0300B040A	12.00	3.00	10.00		0.4	3	1.50	10080885
	LKOC XS 3FA0350B040A	12.00	3.50	10.00		0.4	3	1.50	10080886
	LKOC XS 3FA0400B040A	12.00	4.00	10.00		0.4	3	1.50	10080887
	LKOC XS 3FA0450B040A	12.00	4.50	10.00		0.4	3	2.50	10080888
	LKOC XS 3FA0500B040A	12.00	5.00	10.00		0.4	3	2.50	10080889
Chamfer transition	LKOC XS 3FA0150C020A	12.00	1.50	10.00		0.2	3	1.00	10080890
	LKOC XS 3FA0200C020A	12.00	2.00	10.00		0.2	3	1.00	10080891
	LKOC XS 3FA0250C040A	12.00	2.50	10.00		0.4	3	1.00	10080892
	LKOC XS 3FA0300C040A	12.00	3.00	10.00		0.4	3	1.50	10080893
	LKOC XS 3FA0350C040A	12.00	3.50	10.00		0.4	3	1.50	10080894
	LKOC XS 3FA0400C040A	12.00	4.00	10.00		0.4	3	1.50	10080895
	LKOC XS 3FA0450C040A	12.00	4.50	10.00		0.4	3	2.50	10080896
	LKOC XS 3FA0500C040A	12.00	5.00	10.00		0.4	3	2.50	10080897

	M01	M02	M03
	Vc in m/min	Vc in m/min	Vc in m/min
	60-120	50-100	40-80
	fn in mm	fn in mm	fn in mm
without transition	0.1-0.2	0.1-0.2	0.1-0.2
	0.1-0.2	0.1-0.2	0.1-0.2
	0.1-0.2	0.1-0.2	0.1-0.2
	0.15-0.25	0.15-0.25	0.15-0.25
	0.15-0.25	0.15-0.25	0.15-0.25
	0.15-0.25	0.15-0.25	0.15-0.25
	0.2-0.35	0.2-0.35	0.2-0.35
	0.2-0.35	0.2-0.35	0.2-0.35
Radius transition	0.1-0.2	0.1-0.2	0.1-0.2
	0.1-0.2	0.1-0.2	0.1-0.2
	0.1-0.2	0.1-0.2	0.1-0.2
	0.15-0.25	0.15-0.25	0.15-0.25
	0.15-0.25	0.15-0.25	0.15-0.25
	0.15-0.25	0.15-0.25	0.15-0.25
	0.2-0.35	0.2-0.35	0.2-0.35
	0.2-0.35	0.2-0.35	0.2-0.35
Chamfer transition	0.1-0.2	0.1-0.2	0.1-0.2
	0.1-0.2	0.1-0.2	0.1-0.2
	0.1-0.2	0.1-0.2	0.1-0.2
	0.15-0.25	0.15-0.25	0.15-0.25
	0.15-0.25	0.15-0.25	0.15-0.25
	0.15-0.25	0.15-0.25	0.15-0.25
	0.2-0.35	0.2-0.35	0.2-0.35
	0.2-0.35	0.2-0.35	0.2-0.35

Cutting inserts Leistriz OverCut for stainless steel

Blade type S - 3 cutting edges - external cooling - coated - metric - right hand cutting

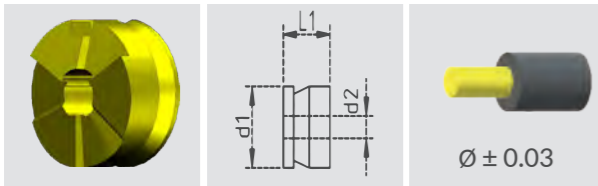


	Description	d1	d2	L1	Chamfer	Radius	Tooth	ap max.	Order-No.
without transition	LKOC S 3FA0450A000A	16.00	4.50	10.00	--	--	3	1.50	10080898
	LKOC S 3FA0500A000A	16.00	5.00	10.00	--	--	3	1.50	10080899
	LKOC S 3FA0550A000A	16.00	5.50	10.00	--	--	3	1.50	10080900
	LKOC S 3FA0600A000A	16.00	6.00	10.00	--	--	3	2.00	10080901
	LKOC S 3FA0650A000A	16.00	6.50	10.00	--	--	3	2.00	10080902
	LKOC S 3FA0700A000A	16.00	7.00	10.00	--	--	3	2.00	10080903
	LKOC S 3FA0750A000A	16.00	7.50	10.00	--	--	3	2.50	10080904
	LKOC S 3FA0800A000A	16.00	8.00	10.00	--	--	3	2.50	10080905
Radius transition	LKOC S 3FA0450B040A	16.00	4.50	10.00		0.4	3	1.50	10080906
	LKOC S 3FA0500B040A	16.00	5.00	10.00		0.4	3	1.50	10080907
	LKOC S 3FA0550B040A	16.00	5.50	10.00		0.4	3	1.50	10080908
	LKOC S 3FA0600B040A	16.00	6.00	10.00		0.4	3	2.00	10080909
	LKOC S 3FA0650B040A	16.00	6.50	10.00		0.4	3	2.00	10080910
	LKOC S 3FA0700B040A	16.00	7.00	10.00		0.4	3	2.00	10080911
	LKOC S 3FA0750B040A	16.00	7.50	10.00		0.4	3	2.50	10080912
	LKOC S 3FA0800B040A	16.00	8.00	10.00		0.4	3	2.50	10080913
Chamfer transition	LKOC S 3FA0450C040A	16.00	4.50	10.00		0.4	3	1.50	10080914
	LKOC S 3FA0500C040A	16.00	5.00	10.00		0.4	3	1.50	10080915
	LKOC S 3FA0550C040A	16.00	5.50	10.00		0.4	3	1.50	10080916
	LKOC S 3FA0600C040A	16.00	6.00	10.00		0.4	3	2.00	10080917
	LKOC S 3FA0650C040A	16.00	6.50	10.00		0.4	3	2.00	10080918
	LKOC S 3FA0700C040A	16.00	7.00	10.00		0.4	3	2.00	10080919
	LKOC S 3FA0750C040A	16.00	7.50	10.00		0.4	3	2.50	10080920
	LKOC S 3FA0800C040A	16.00	8.00	10.00		0.4	3	2.50	10080921

	M01	M02	M03
	Vc in m/min	Vc in m/min	Vc in m/min
	60-120	50-100	40-80
	fn in mm	fn in mm	fn in mm
without transition	0.1-0.2	0.1-0.2	0.1-0.2
	0.1-0.2	0.1-0.2	0.1-0.2
	0.1-0.2	0.1-0.2	0.1-0.2
	0.15-0.25	0.15-0.25	0.15-0.25
	0.15-0.25	0.15-0.25	0.15-0.25
	0.15-0.25	0.15-0.25	0.15-0.25
	0.2-0.35	0.2-0.35	0.2-0.35
	0.2-0.35	0.2-0.35	0.2-0.35
Radius transition	0.1-0.2	0.1-0.2	0.1-0.2
	0.1-0.2	0.1-0.2	0.1-0.2
	0.1-0.2	0.1-0.2	0.1-0.2
	0.15-0.25	0.15-0.25	0.15-0.25
	0.15-0.25	0.15-0.25	0.15-0.25
	0.15-0.25	0.15-0.25	0.15-0.25
	0.2-0.35	0.2-0.35	0.2-0.35
	0.2-0.35	0.2-0.35	0.2-0.35
Chamfer transition	0.1-0.2	0.1-0.2	0.1-0.2
	0.1-0.2	0.1-0.2	0.1-0.2
	0.1-0.2	0.1-0.2	0.1-0.2
	0.15-0.25	0.15-0.25	0.15-0.25
	0.15-0.25	0.15-0.25	0.15-0.25
	0.15-0.25	0.15-0.25	0.15-0.25
	0.2-0.35	0.2-0.35	0.2-0.35
	0.2-0.35	0.2-0.35	0.2-0.35

Cutting inserts Leistriz OverCut for stainless steel

Blade type M - 3 cutting edges - external cooling - coated - metric - right hand cutting

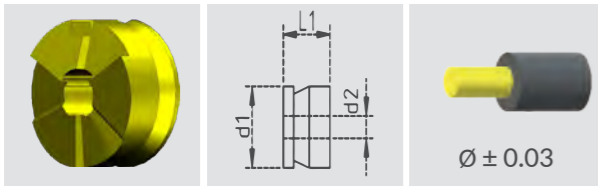


	Description	d1	d2	L1	Chamfer	Radius	Tooth	ap max.	Order-No.
without transition	LKOC M 3FA0850A000A	20.00	8.50	10.00	--	--	3	1.50	10080922
	LKOC M 3FA0900A000A	20.00	9.00	10.00	--	--	3	1.50	10080923
	LKOC M 3FA0950A000A	20.00	9.50	10.00	--	--	3	1.50	10080924
	LKOC M 3FA1000A000A	20.00	10.00	10.00	--	--	3	2.00	10080925
	LKOC M 3FA1050A000A	20.00	10.50	10.00	--	--	3	2.00	10080926
	LKOC M 3FA1100A000A	20.00	11.00	10.00	--	--	3	2.00	10080927
	LKOC M 3FA1150A000A	20.00	11.50	10.00	--	--	3	2.50	10080928
	LKOC M 3FA1200A000A	20.00	12.00	10.00	--	--	3	2.50	10080929
Radius transition	LKOC S 3FA0450B080A	20.00	8.50	10.00		0.8	3	1.50	10080930
	LKOC S 3FA0500B080A	20.00	9.00	10.00		0.8	3	1.50	10080956
	LKOC S 3FA0550B080A	20.00	9.50	10.00		0.8	3	1.50	10080957
	LKOC S 3FA0600B080A	20.00	10.00	10.00		0.8	3	2.00	10080958
	LKOC S 3FA0650B080A	20.00	10.50	10.00		0.8	3	2.00	10080959
	LKOC S 3FA0700B080A	20.00	11.00	10.00		0.8	3	2.00	10080960
	LKOC S 3FA0750B080A	20.00	11.50	10.00		0.8	3	2.50	10080961
	LKOC S 3FA0800B080A	20.00	12.00	10.00		0.8	3	2.50	10080962
Chamfer transition	LKOC S 3FA0450C080A	20.00	8.50	10.00		0.8	3	1.50	10080963
	LKOC S 3FA0500C080A	20.00	9.00	10.00		0.8	3	1.50	10080964
	LKOC S 3FA0550C080A	20.00	9.50	10.00		0.8	3	1.50	10080965
	LKOC S 3FA0600C080A	20.00	10.00	10.00		0.8	3	2.00	10080966
	LKOC S 3FA0650C080A	20.00	10.50	10.00		0.8	3	2.00	10080967
	LKOC S 3FA0700C080A	20.00	11.00	10.00		0.8	3	2.00	10080968
	LKOC S 3FA0750C080A	20.00	11.50	10.00		0.8	3	2.50	10080969
	LKOC S 3FA0800C080A	20.00	12.00	10.00		0.8	3	2.50	10080970

	M01	M02	M03
	Vc in m/min	Vc in m/min	Vc in m/min
	60-120	50-100	40-80
	fn in mm	fn in mm	fn in mm
without transition	0.1-0.2	0.1-0.2	0.1-0.2
	0.1-0.2	0.1-0.2	0.1-0.2
	0.1-0.2	0.1-0.2	0.1-0.2
	0.15-0.25	0.15-0.25	0.15-0.25
	0.15-0.25	0.15-0.25	0.15-0.25
	0.15-0.25	0.15-0.25	0.15-0.25
	0.2-0.35	0.2-0.35	0.2-0.35
	0.2-0.35	0.2-0.35	0.2-0.35
Radius transition	0.1-0.2	0.1-0.2	0.1-0.2
	0.1-0.2	0.1-0.2	0.1-0.2
	0.1-0.2	0.1-0.2	0.1-0.2
	0.15-0.25	0.15-0.25	0.15-0.25
	0.15-0.25	0.15-0.25	0.15-0.25
	0.15-0.25	0.15-0.25	0.15-0.25
	0.2-0.35	0.2-0.35	0.2-0.35
	0.2-0.35	0.2-0.35	0.2-0.35
Chamfer transition	0.1-0.2	0.1-0.2	0.1-0.2
	0.1-0.2	0.1-0.2	0.1-0.2
	0.1-0.2	0.1-0.2	0.1-0.2
	0.15-0.25	0.15-0.25	0.15-0.25
	0.15-0.25	0.15-0.25	0.15-0.25
	0.15-0.25	0.15-0.25	0.15-0.25
	0.2-0.35	0.2-0.35	0.2-0.35
	0.2-0.35	0.2-0.35	0.2-0.35

Cutting inserts Leistriz OverCut for stainless steel

Blade type L - 3 cutting edges - external cooling - coated - metric - right hand cutting

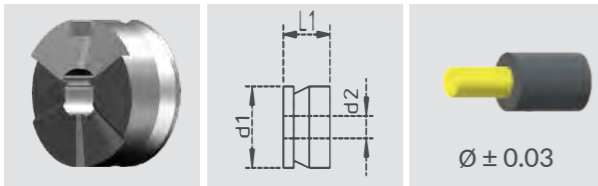


	Description	d1	d2	L1	Chamfer	Radius	Tooth	ap max.	Order-No.
without transition	LKOC L 3FA1300A000A	32.00	13.00	12.00	--	--	3	2.00	10080971
	LKOC L 3FA1400A000A	32.00	14.00	12.00	--	--	3	2.00	10080972
	LKOC L 3FA15000A000A	32.00	15.00	12.00	--	--	3	2.00	10080973
	LKOC L 3FA1600A000A	32.00	16.00	12.00	--	--	3	2.00	10080974
	LKOC L 3FA1700A000A	32.00	17.00	12.00	--	--	3	2.50	10080975
	LKOC L 3FA1800A000A	32.00	18.00	12.00	--	--	3	2.50	10080976
	LKOC L 3FA1900A000A	32.00	19.00	12.00	--	--	3	2.50	10080977
	LKOC L 3FA2000A000A	32.00	20.00	12.00	--	--	3	2.50	10080978
Radius transition	LKOC L 3FA1300B080A	32.00	13.00	12.00		0.8	3	2.00	10080979
	LKOC L 3FA1400B080A	32.00	14.00	12.00		0.8	3	2.00	10080980
	LKOC L 3FA1500B080A	32.00	15.00	12.00		0.8	3	2.00	10080981
	LKOC L 3FA1600B080A	32.00	16.00	12.00		0.8	3	2.00	10080982
	LKOC L 3FA1700B080A	32.00	17.00	12.00		0.8	3	2.50	10080983
	LKOC L 3FA1800B080A	32.00	18.00	12.00		0.8	3	2.50	10080984
	LKOC L 3FA1900B080A	32.00	19.00	12.00		0.8	3	2.50	10080985
	LKOC L 3FA2000B080A	32.00	20.00	12.00		0.8	3	2.50	10080986
Chamfer transition	LKOC L 3FA1300C080A	32.00	13.00	12.00		0.8	3	2.00	10080987
	LKOC L 3FA1400C080A	32.00	14.00	12.00		0.8	3	2.00	10080988
	LKOC L 3FA1500C080A	32.00	15.00	12.00		0.8	3	2.00	10080989
	LKOC L 3FA1600C080A	32.00	16.00	12.00		0.8	3	2.00	10080990
	LKOC L 3FA1700C080A	32.00	17.00	12.00		0.8	3	2.50	10080991
	LKOC L 3FA1800C080A	32.00	18.00	12.00		0.8	3	2.50	10080992
	LKOC L 3FA1900C080A	32.00	19.00	12.00		0.8	3	2.50	10080993
	LKOC L 3FA2000C080A	32.00	20.00	12.00		0.8	3	2.50	10080994

	M01	M02	M03
	Vc in m/min	Vc in m/min	Vc in m/min
	60-120	50-100	40-80
	fn in mm	fn in mm	fn in mm
without transition	0.1-0.2	0.1-0.2	0.1-0.2
	0.1-0.2	0.1-0.2	0.1-0.2
	0.1-0.2	0.1-0.2	0.1-0.2
	0.15-0.25	0.15-0.25	0.15-0.25
	0.15-0.25	0.15-0.25	0.15-0.25
	0.15-0.25	0.15-0.25	0.15-0.25
	0.2-0.35	0.2-0.35	0.2-0.35
	0.2-0.35	0.2-0.35	0.2-0.35
Radius transition	0.1-0.2	0.1-0.2	0.1-0.2
	0.1-0.2	0.1-0.2	0.1-0.2
	0.1-0.2	0.1-0.2	0.1-0.2
	0.15-0.25	0.15-0.25	0.15-0.25
	0.15-0.25	0.15-0.25	0.15-0.25
	0.15-0.25	0.15-0.25	0.15-0.25
	0.2-0.35	0.2-0.35	0.2-0.35
	0.2-0.35	0.2-0.35	0.2-0.35
Chamfer transition	0.1-0.2	0.1-0.2	0.1-0.2
	0.1-0.2	0.1-0.2	0.1-0.2
	0.1-0.2	0.1-0.2	0.1-0.2
	0.15-0.25	0.15-0.25	0.15-0.25
	0.15-0.25	0.15-0.25	0.15-0.25
	0.15-0.25	0.15-0.25	0.15-0.25
	0.2-0.35	0.2-0.35	0.2-0.35
	0.2-0.35	0.2-0.35	0.2-0.35

Cutting inserts Leistriz OverCut for aluminium alloys

Blade type XS - 3 cutting edges - external cooling - uncoated - metric - right hand cutting

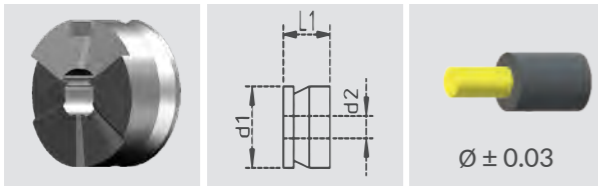


	Description	d1	d2	L1	Chamfer	Radius	Tooth	ap max.	Order-No.
without transition	LKOC XS 3BA0150A000A	12.00	1.50	10.00	--	--	3	1.00	10080995
	LKOC XS 3BA0200A000A	12.00	2.00	10.00	--	--	3	1.00	10080996
	LKOC XS 3BA0250A000A	12.00	2.50	10.00	--	--	3	1.00	10080997
	LKOC XS 3BA0300A000A	12.00	3.00	10.00	--	--	3	1.50	10080998
	LKOC XS 3BA0350A000A	12.00	3.50	10.00	--	--	3	1.50	10080999
	LKOC XS 3BA0400A000A	12.00	4.00	10.00	--	--	3	1.50	10081000
	LKOC XS 3BA0450A000A	12.00	4.50	10.00	--	--	3	2.50	10081001
	LKOC XS 3BA0500A000A	12.00	5.00	10.00	--	--	3	2.50	10081002
Radius transition	LKOC XS 3BA0150B020A	12.00	1.50	10.00		0.2	3	1.00	10081003
	LKOC XS 3BA0200B020A	12.00	2.00	10.00		0.2	3	1.00	10081004
	LKOC XS 3BA0250B040A	12.00	2.50	10.00		0.4	3	1.00	10081005
	LKOC XS 3BA0300B040A	12.00	3.00	10.00		0.4	3	1.50	10081006
	LKOC XS 3BA0350B040A	12.00	3.50	10.00		0.4	3	1.50	10081007
	LKOC XS 3BA0400B040A	12.00	4.00	10.00		0.4	3	1.50	10081008
	LKOC XS 3BA0450B040A	12.00	4.50	10.00		0.4	3	2.50	10081009
	LKOC XS 3BA0500B040A	12.00	5.00	10.00		0.4	3	2.50	10081010
Chamfer transition	LKOC XS 3BA0150C020A	12.00	1.50	10.00		0.2	3	1.00	10081011
	LKOC XS 3BA0200C020A	12.00	2.00	10.00		0.2	3	1.00	10081012
	LKOC XS 3BA0250C040A	12.00	2.50	10.00		0.4	3	1.00	10081013
	LKOC XS 3BA0300C040A	12.00	3.00	10.00		0.4	3	1.50	10081014
	LKOC XS 3BA0350C040A	12.00	3.50	10.00		0.4	3	1.50	10081015
	LKOC XS 3BA0400C040A	12.00	4.00	10.00		0.4	3	1.50	10081016
	LKOC XS 3BA0450C040A	12.00	4.50	10.00		0.4	3	2.50	10081017
	LKOC XS 3BA0500C040A	12.00	5.00	10.00		0.4	3	2.50	10081018

	N01	N02	N03	N04
	Vc in m/min	Vc in m/min	Vc in m/min	Vc in m/min
	40-350	40-300	40-250	40-200
	fn in mm	fn in mm	fn in mm	fn in mm
without transition	0.15-0.3	0.15-0.3	0.15-0.3	0.15-0.3
	0.15-0.3	0.15-0.3	0.15-0.3	0.15-0.3
	0.15-0.3	0.15-0.3	0.15-0.3	0.15-0.3
	0.30-0.45	0.30-0.45	0.30-0.45	0.30-0.45
	0.30-0.45	0.30-0.45	0.30-0.45	0.30-0.45
	0.30-0.45	0.30-0.45	0.30-0.45	0.30-0.45
	0.30-0.45	0.30-0.45	0.30-0.45	0.30-0.45
	0.30-0.45	0.30-0.45	0.30-0.45	0.30-0.45
Radius transition	0.15-0.3	0.15-0.3	0.15-0.3	0.15-0.3
	0.15-0.3	0.15-0.3	0.15-0.3	0.15-0.3
	0.15-0.3	0.15-0.3	0.15-0.3	0.15-0.3
	0.30-0.45	0.30-0.45	0.30-0.45	0.30-0.45
	0.30-0.45	0.30-0.45	0.30-0.45	0.30-0.45
	0.30-0.45	0.30-0.45	0.30-0.45	0.30-0.45
	0.30-0.45	0.30-0.45	0.30-0.45	0.30-0.45
	0.30-0.45	0.30-0.45	0.30-0.45	0.30-0.45
Chamfer transition	0.15-0.3	0.15-0.3	0.15-0.3	0.15-0.3
	0.15-0.3	0.15-0.3	0.15-0.3	0.15-0.3
	0.15-0.3	0.15-0.3	0.15-0.3	0.15-0.3
	0.30-0.45	0.30-0.45	0.30-0.45	0.30-0.45
	0.30-0.45	0.30-0.45	0.30-0.45	0.30-0.45
	0.30-0.45	0.30-0.45	0.30-0.45	0.30-0.45
	0.30-0.45	0.30-0.45	0.30-0.45	0.30-0.45
	0.30-0.45	0.30-0.45	0.30-0.45	0.30-0.45

Cutting inserts Leistriz OverCut for aluminium alloys

Blade type S - 3 cutting edges - external cooling - uncoated - metric - right hand cutting

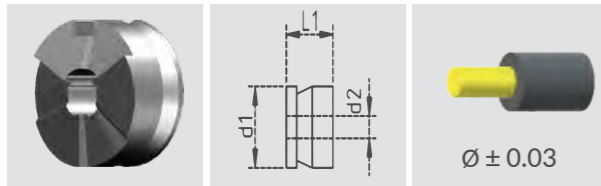


	Description	d1	d2	L1	Chamfer	Radius	Tooth	ap max.	Order-No.
without transition	LKOC S 3BA0450A000A	16.00	4.50	10.00	--	--	3	1.50	10081019
	LKOC S 3BA0500A000A	16.00	5.00	10.00	--	--	3	1.50	10081020
	LKOC S 3BA0550A000A	16.00	5.50	10.00	--	--	3	1.50	10081021
	LKOC S 3BA0600A000A	16.00	6.00	10.00	--	--	3	2.00	10081022
	LKOC S 3BA0650A000A	16.00	6.50	10.00	--	--	3	2.00	10081023
	LKOC S 3BA0700A000A	16.00	7.00	10.00	--	--	3	2.00	10081024
	LKOC S 3BA0750A000A	16.00	7.50	10.00	--	--	3	2.50	10081025
	LKOC S 3BA0800A000A	16.00	8.00	10.00	--	--	3	2.50	10081026
Radius transition	LKOC S 3BA0450B040A	16.00	4.50	10.00		0.4	3	1.50	10081027
	LKOC S 3BA0500B040A	16.00	5.00	10.00		0.4	3	1.50	10081028
	LKOC S 3BA0550B040A	16.00	5.50	10.00		0.4	3	1.50	10081029
	LKOC S 3BA0600B040A	16.00	6.00	10.00		0.4	3	2.00	10081030
	LKOC S 3BA0650B040A	16.00	6.50	10.00		0.4	3	2.00	10081031
	LKOC S 3BA0700B040A	16.00	7.00	10.00		0.4	3	2.00	10081032
	LKOC S 3BA0750B040A	16.00	7.50	10.00		0.4	3	2.50	10081033
	LKOC S 3BA0800B040A	16.00	8.00	10.00		0.4	3	2.50	10081034
Chamfer transition	LKOC S 3BA0450C040A	16.00	4.50	10.00		0.4	3	1.50	10081035
	LKOC S 3BA0500C040A	16.00	5.00	10.00		0.4	3	1.50	10081036
	LKOC S 3BA0550C040A	16.00	5.50	10.00		0.4	3	1.50	10081037
	LKOC S 3BA0600C040A	16.00	6.00	10.00		0.4	3	2.00	10081038
	LKOC S 3BA0650C040A	16.00	6.50	10.00		0.4	3	2.00	10081039
	LKOC S 3BA0700C040A	16.00	7.00	10.00		0.4	3	2.00	10081040
	LKOC S 3BA0750C040A	16.00	7.50	10.00		0.4	3	2.50	10081041
	LKOC S 3BA0800C040A	16.00	8.00	10.00		0.4	3	2.50	10081042

	N01	N02	N03	N04
	Vc in m/min	Vc in m/min	Vc in m/min	Vc in m/min
	40-350	40-300	40-250	40-200
	fn in mm	fn in mm	fn in mm	fn in mm
without transition	0.20-0.35	0.20-0.35	0.20-0.35	0.20-0.35
	0.20-0.35	0.20-0.35	0.20-0.35	0.20-0.35
	0.20-0.35	0.20-0.35	0.20-0.35	0.20-0.35
	0.30-0.45	0.30-0.45	0.30-0.45	0.30-0.45
	0.35-0.50	0.35-0.50	0.35-0.50	0.35-0.50
	0.35-0.50	0.35-0.50	0.35-0.50	0.35-0.50
	0.35-0.50	0.35-0.50	0.35-0.50	0.35-0.50
	0.35-0.50	0.35-0.50	0.35-0.50	0.35-0.50
Radius transition	0.20-0.35	0.20-0.35	0.20-0.35	0.20-0.35
	0.20-0.35	0.20-0.35	0.20-0.35	0.20-0.35
	0.20-0.35	0.20-0.35	0.20-0.35	0.20-0.35
	0.30-0.45	0.30-0.45	0.30-0.45	0.30-0.45
	0.35-0.50	0.35-0.50	0.35-0.50	0.35-0.50
	0.35-0.50	0.35-0.50	0.35-0.50	0.35-0.50
	0.35-0.50	0.35-0.50	0.35-0.50	0.35-0.50
	0.35-0.50	0.35-0.50	0.35-0.50	0.35-0.50
Chamfer transition	0.20-0.35	0.20-0.35	0.20-0.35	0.20-0.35
	0.20-0.35	0.20-0.35	0.20-0.35	0.20-0.35
	0.20-0.35	0.20-0.35	0.20-0.35	0.20-0.35
	0.30-0.45	0.30-0.45	0.30-0.45	0.30-0.45
	0.35-0.50	0.35-0.50	0.35-0.50	0.35-0.50
	0.35-0.50	0.35-0.50	0.35-0.50	0.35-0.50
	0.35-0.50	0.35-0.50	0.35-0.50	0.35-0.50
	0.35-0.50	0.35-0.50	0.35-0.50	0.35-0.50

Cutting inserts Leistriz OverCut for aluminium alloys

Blade type M - 3 cutting edges - external cooling - uncoated - metric - right hand cutting

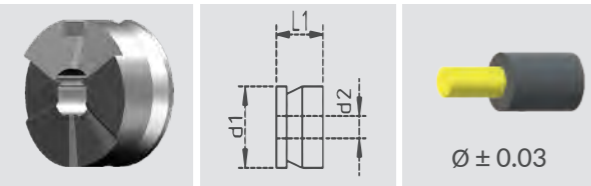


	Description	d1	d2	L1	Chamfer	Radius	Tooth	ap max.	Order-No.
without transition	LKOC M 3BA0850A000A	20.00	8.50	10.00	--	--	3	1.50	10081043
	LKOC M 3BA0900A000A	20.00	9.00	10.00	--	--	3	1.50	10081044
	LKOC M 3BA0950A000A	20.00	9.50	10.00	--	--	3	1.50	10081045
	LKOC M 3BA1000A000A	20.00	10.00	10.00	--	--	3	2.00	10081046
	LKOC M 3BA1050A000A	20.00	10.50	10.00	--	--	3	2.00	10081047
	LKOC M 3BA1100A000A	20.00	11.00	10.00	--	--	3	2.00	10081048
	LKOC M 3BA1150A000A	20.00	11.50	10.00	--	--	3	2.50	10081049
	LKOC M 3BA1200A000A	20.00	12.00	10.00	--	--	3	2.50	10081050
Radius transition	LKOC S 3BA0450B080A	20.00	8.50	10.00		0.8	3	1.50	10081051
	LKOC S 3BA0500B080A	20.00	9.00	10.00		0.8	3	1.50	10081052
	LKOC S 3BA0550B080A	20.00	9.50	10.00		0.8	3	1.50	10081053
	LKOC S 3BA0600B080A	20.00	10.00	10.00		0.8	3	2.00	10081054
	LKOC S 3BA0650B080A	20.00	10.50	10.00		0.8	3	2.00	10081055
	LKOC S 3BA0700B080A	20.00	11.00	10.00		0.8	3	2.00	10081056
	LKOC S 3BA0750B080A	20.00	11.50	10.00		0.8	3	2.50	10081057
	LKOC S 3BA0800B080A	20.00	12.00	10.00		0.8	3	2.50	10081058
Chamfer transition	LKOC S 3BA0450C080A	20.00	8.50	10.00		0.8	3	1.50	10081059
	LKOC S 3BA0500C080A	20.00	9.00	10.00		0.8	3	1.50	10081060
	LKOC S 3BA0550C080A	20.00	9.50	10.00		0.8	3	1.50	10081061
	LKOC S 3BA0600C080A	20.00	10.00	10.00		0.8	3	2.00	10081062
	LKOC S 3BA0650C080A	20.00	10.50	10.00		0.8	3	2.00	10081063
	LKOC S 3BA0700C080A	20.00	11.00	10.00		0.8	3	2.00	10081064
	LKOC S 3BA0750C080A	20.00	11.50	10.00		0.8	3	2.50	10081065
	LKOC S 3BA0800C080A	20.00	12.00	10.00		0.8	3	2.50	10081066

	N01	N02	N03	N04
	Vc in m/min	Vc in m/min	Vc in m/min	Vc in m/min
	40-350	40-300	40-250	40-200
	fn in mm	fn in mm	fn in mm	fn in mm
without transition	0.20-0.50	0.20-0.50	0.20-0.50	0.20-0.50
	0.20-0.50	0.20-0.50	0.20-0.50	0.20-0.50
	0.20-0.50	0.20-0.50	0.20-0.50	0.20-0.50
	0.30-0.50	0.30-0.50	0.30-0.50	0.30-0.50
	0.30-0.50	0.30-0.50	0.30-0.50	0.30-0.50
	0.35-0.60	0.35-0.60	0.35-0.60	0.35-0.60
	0.35-0.60	0.35-0.60	0.35-0.60	0.35-0.60
	0.35-0.60	0.35-0.60	0.35-0.60	0.35-0.60
Radius transition	0.20-0.50	0.20-0.50	0.20-0.50	0.20-0.50
	0.20-0.50	0.20-0.50	0.20-0.50	0.20-0.50
	0.20-0.50	0.20-0.50	0.20-0.50	0.20-0.50
	0.30-0.50	0.30-0.50	0.30-0.50	0.30-0.50
	0.30-0.50	0.30-0.50	0.30-0.50	0.30-0.50
	0.35-0.60	0.35-0.60	0.35-0.60	0.35-0.60
	0.35-0.60	0.35-0.60	0.35-0.60	0.35-0.60
	0.35-0.60	0.35-0.60	0.35-0.60	0.35-0.60
Chamfer transition	0.20-0.50	0.20-0.50	0.20-0.50	0.20-0.50
	0.20-0.50	0.20-0.50	0.20-0.50	0.20-0.50
	0.20-0.50	0.20-0.50	0.20-0.50	0.20-0.50
	0.30-0.50	0.30-0.50	0.30-0.50	0.30-0.50
	0.30-0.50	0.30-0.50	0.30-0.50	0.30-0.50
	0.35-0.60	0.35-0.60	0.35-0.60	0.35-0.60
	0.35-0.60	0.35-0.60	0.35-0.60	0.35-0.60
	0.35-0.60	0.35-0.60	0.35-0.60	0.35-0.60

Cutting inserts Leistriz OverCut brass leaded

Blade type XS - 3 cutting edges - external cooling - uncoated - metric - right hand cutting

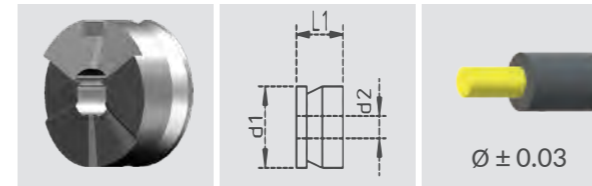


N06
Vc in m/min
70-150

	Description	d1	d2	L1	Chamfer	Radius	Tooth	ap max.	Order-No.	fn in mm
without transition	LKOC XS 3AA0150A000A	12.00	1.50	10.00	--	--	3	1.50	10081091	0.15-0.3
	LKOC XS 3AA0200A000A	12.00	2.00	10.00	--	--	3	1.50	10081092	0.15-0.3
	LKOC XS 3AA0250A000A	12.00	2.50	10.00	--	--	3	2.00	10081093	0.15-0.3
	LKOC XS 3AA0300A000A	12.00	3.00	10.00	--	--	3	2.50	10081094	0.30-0.45
	LKOC XS 3AA0350A000A	12.00	3.50	10.00	--	--	3	2.50	10081095	0.30-0.45
	LKOC XS 3AA0400A000A	12.00	4.00	10.00	--	--	3	2.50	10081096	0.30-0.45
	LKOC XS 3AA0450A000A	12.00	4.50	10.00	--	--	3	2.50	10081097	0.30-0.45
	LKOC XS 3AA0500A000A	12.00	5.00	10.00	--	--	3	2.50	10081098	0.30-0.45
Radius transition	LKOC XS 3AA0150B020A	12.00	1.50	10.00		0.2	3	1.50	10081099	0.15-0.3
	LKOC XS 3AA0200B020A	12.00	2.00	10.00		0.2	3	1.50	10081100	0.15-0.3
	LKOC XS 3AA0250B040A	12.00	2.50	10.00		0.4	3	2.00	10081101	0.15-0.3
	LKOC XS 3AA0300B040A	12.00	3.00	10.00		0.4	3	2.50	10081102	0.30-0.45
	LKOC XS 3AA0350B040A	12.00	3.50	10.00		0.4	3	2.50	10081103	0.30-0.45
	LKOC XS 3AA0400B040A	12.00	4.00	10.00		0.4	3	2.50	10081104	0.30-0.45
	LKOC XS 3AA0450B040A	12.00	4.50	10.00		0.4	3	2.50	10081105	0.30-0.45
	LKOC XS 3AA0500B040A	12.00	5.00	10.00		0.4	3	2.50	10081106	0.30-0.45
Chamfer transition	LKOC XS 3AA0150C020A	12.00	1.50	10.00		0.2	3	1.50	10081107	0.15-0.3
	LKOC XS 3AA0200C020A	12.00	2.00	10.00		0.2	3	1.50	10081108	0.15-0.3
	LKOC XS 3AA0250C040A	12.00	2.50	10.00		0.4	3	2.00	10081109	0.15-0.3
	LKOC XS 3AA0300C040A	12.00	3.00	10.00		0.4	3	2.50	10081110	0.30-0.45
	LKOC XS 3AA0350C040A	12.00	3.50	10.00		0.4	3	2.50	10081111	0.30-0.45
	LKOC XS 3AA0400C040A	12.00	4.00	10.00		0.4	3	2.50	10081112	0.30-0.45
	LKOC XS 3AA0450C040A	12.00	4.50	10.00		0.4	3	2.50	10081113	0.30-0.45
	LKOC XS 3AA0500C040A	12.00	5.00	10.00		0.4	3	2.50	10081114	0.30-0.45

Cutting inserts Leistriz OverCut brass leaded

Blade type S - 3 cutting edges - external cooling - uncoated - metric - right hand cutting

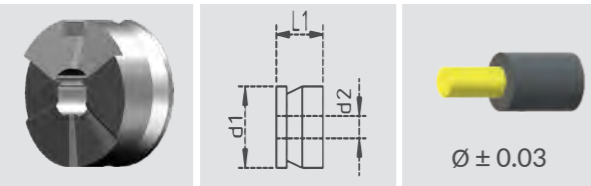


N06
Vc in m/min
40-100

	Description	d1	d2	L1	Chamfer	Radius	Tooth	ap max.	Order-No.	fn in mm
without transition	LKOC S 3AA0450A000A	16.00	4.50	10.00	--	--	3	2.00	10081115	0.20-0.35
	LKOC S 3AA0500A000A	16.00	5.00	10.00	--	--	3	2.00	10081116	0.20-0.35
	LKOC S 3AA0550A000A	16.00	5.50	10.00	--	--	3	2.50	10081117	0.20-0.35
	LKOC S 3AA0600A000A	16.00	6.00	10.00	--	--	3	3.00	10081118	0.30-0.45
	LKOC S 3AA0650A000A	16.00	6.50	10.00	--	--	3	3.00	10081119	0.35-0.50
	LKOC S 3AA0700A000A	16.00	7.00	10.00	--	--	3	3.00	10081120	0.35-0.50
	LKOC S 3AA0750A000A	16.00	7.50	10.00	--	--	3	3.00	10081121	0.35-0.50
	LKOC S 3AA0800A000A	16.00	8.00	10.00	--	--	3	4.00	10081122	0.35-0.50
	Radius transition	LKOC S 3AA0450B040A	16.00	4.50	10.00		0.4	3	2.00	10081123
LKOC S 3AA0500B040A		16.00	5.00	10.00		0.4	3	2.00	10081124	0.20-0.35
LKOC S 3AA0550B040A		16.00	5.50	10.00		0.4	3	2.50	10081125	0.20-0.35
LKOC S 3AA0600B040A		16.00	6.00	10.00		0.4	3	3.00	10081126	0.30-0.45
LKOC S 3AA0650B040A		16.00	6.50	10.00		0.4	3	3.00	10081127	0.35-0.50
LKOC S 3AA0700B040A		16.00	7.00	10.00		0.4	3	3.00	10081128	0.35-0.50
LKOC S 3AA0750B040A		16.00	7.50	10.00		0.4	3	3.00	10081129	0.35-0.50
LKOC S 3AA0800B040A		16.00	8.00	10.00		0.4	3	4.00	10081130	0.35-0.50
Chamfer transition	LKOC S 3AA0450C040A	16.00	4.50	10.00		0.4	3	2.00	10081131	0.20-0.35
	LKOC S 3AA0500C040A	16.00	5.00	10.00		0.4	3	2.00	10081132	0.20-0.35
	LKOC S 3AA0550C040A	16.00	5.50	10.00		0.4	3	2.50	10081133	0.20-0.35
	LKOC S 3AA0600C040A	16.00	6.00	10.00		0.4	3	3.00	10081134	0.30-0.45
	LKOC S 3AA0650C040A	16.00	6.50	10.00		0.4	3	3.00	10081135	0.35-0.50
	LKOC S 3AA0700C040A	16.00	7.00	10.00		0.4	3	3.00	10081136	0.35-0.50
	LKOC S 3AA0750C040A	16.00	7.50	10.00		0.4	3	3.00	10081137	0.35-0.50
	LKOC S 3AA0800C040A	16.00	8.00	10.00		0.4	3	4.00	10081138	0.35-0.50

Cutting inserts Leistritz OverCut brass leaded

Blade type M - 3 cutting edges - external cooling - uncoated - metric - right hand cutting

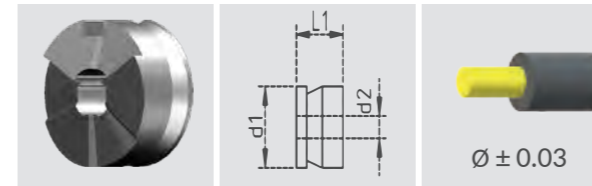


N06
Vc in m/min
40-100

	Description	d1	d2	L1	Chamfer	Radius	Tooth	ap max.	Order-No.	fn in mm
without transition	LKOC M 3AA0850A000A	20.00	8.50	10.00	--	--	3	2.50	10081139	0.20-0.50
	LKOC M 3AA0900A000A	20.00	9.00	10.00	--	--	3	2.50	10081140	0.20-0.50
	LKOC M 3AA0950A000A	20.00	9.50	10.00	--	--	3	3.00	10081141	0.20-0.50
	LKOC M 3AA1000A000A	20.00	10.00	10.00	--	--	3	3.50	10081142	0.30-0.50
	LKOC M 3AA1050A000A	20.00	10.50	10.00	--	--	3	3.50	10081143	0.30-0.50
	LKOC M 3AA1100A000A	20.00	11.00	10.00	--	--	3	4.00	10081144	0.35-0.60
	LKOC M 3AA1150A000A	20.00	11.50	10.00	--	--	3	4.00	10081145	0.35-0.60
	LKOC M 3AA1200A000A	20.00	12.00	10.00	--	--	3	4.00	10081146	0.35-0.60
Radius transition	LKOC S 3AA0450B080A	20.00	8.50	10.00		0.8	3	2.50	10081147	0.20-0.50
	LKOC S 3AA0500B080A	20.00	9.00	10.00		0.8	3	2.50	10081148	0.20-0.50
	LKOC S 3AA0550B080A	20.00	9.50	10.00		0.8	3	3.00	10081149	0.20-0.50
	LKOC S 3AA0600B080A	20.00	10.00	10.00		0.8	3	3.50	10081150	0.30-0.50
	LKOC S 3AA0650B080A	20.00	10.50	10.00		0.8	3	3.50	10081151	0.30-0.50
	LKOC S 3AA0700B080A	20.00	11.00	10.00		0.8	3	4.00	10081152	0.35-0.60
	LKOC S 3AA0750B080A	20.00	11.50	10.00		0.8	3	4.00	10081153	0.35-0.60
	LKOC S 3AA0800B080A	20.00	12.00	10.00		0.8	3	4.00	10081154	0.35-0.60
Chamfer transition	LKOC S 3AA0450C080A	20.00	8.50	10.00		0.8	3	2.50	10081155	0.20-0.50
	LKOC S 3AA0500C080A	20.00	9.00	10.00		0.8	3	2.50	10081156	0.20-0.50
	LKOC S 3AA0550C080A	20.00	9.50	10.00		0.8	3	3.00	10081157	0.20-0.50
	LKOC S 3AA0600C080A	20.00	10.00	10.00		0.8	3	3.50	10081158	0.30-0.50
	LKOC S 3AA0650C080A	20.00	10.50	10.00		0.8	3	3.50	10081159	0.30-0.50
	LKOC S 3AA0700C080A	20.00	11.00	10.00		0.8	3	4.00	10081160	0.35-0.60
	LKOC S 3AA0750C080A	20.00	11.50	10.00		0.8	3	4.00	10081161	0.35-0.60
	LKOC S 3AA0800C080A	20.00	12.00	10.00		0.8	3	4.00	10081162	0.35-0.60

Cutting inserts Leistritz OverCut brass leaded

Blade type L - 3 cutting edges - external cooling - uncoated - metric - right hand cutting

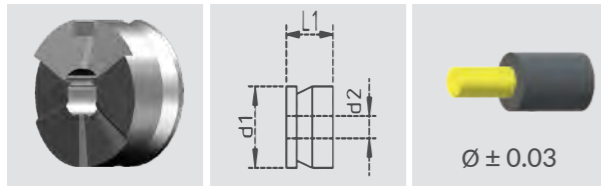


N06
Vc in m/min
40-100

	Description	d1	d2	L1	Chamfer	Radius	Tooth	ap max.	Order-No.	fn in mm
without transition	LKOC L 3AA1300A000A	32.00	13.00	12.00	--	--	3	3.50	10081163	0.40-1.00
	LKOC L 3AA1400A000A	32.00	14.00	12.00	--	--	3	3.50	10081164	0.40-1.00
	LKOC L 3AA1500A000A	32.00	15.00	12.00	--	--	3	4.00	10081165	0.40-1.00
	LKOC L 3AA1600A000A	32.00	16.00	12.00	--	--	3	4.00	10081166	0.40-1.00
	LKOC L 3AA1700A000A	32.00	17.00	12.00	--	--	3	4.50	10081167	0.40-1.00
	LKOC L 3AA1800A000A	32.00	18.00	12.00	--	--	3	5.00	10081168	0.40-1.00
	LKOC L 3AA1900A000A	32.00	19.00	12.00	--	--	3	5.50	10081169	0.40-1.00
	LKOC L 3AA2000A000A	32.00	20.00	12.00	--	--	3	5.50	10081170	0.40-1.00
Radius transition	LKOC L 3AA1300B080A	32.00	13.00	12.00		0.8	3	3.50	10081171	0.40-1.20
	LKOC L 3AA1400B080A	32.00	14.00	12.00		0.8	3	3.50	10081172	0.40-1.20
	LKOC L 3AA1500B080A	32.00	15.00	12.00		0.8	3	4.00	10081173	0.40-1.20
	LKOC L 3AA1600B080A	32.00	16.00	12.00		0.8	3	4.00	10081174	0.40-1.20
	LKOC L 3AA1700B080A	32.00	17.00	12.00		0.8	3	4.50	10081175	0.40-1.20
	LKOC L 3AA1800B080A	32.00	18.00	12.00		0.8	3	5.00	10081176	0.40-1.20
	LKOC L 3AA1900B080A	32.00	19.00	12.00		0.8	3	5.50	10081177	0.40-1.20
	LKOC L 3AA2000B080A	32.00	20.00	12.00		0.8	3	5.50	10081178	0.40-1.20
Chamfer transition	LKOC L 3AA1300C080A	32.00	13.00	12.00		0.8	3	3.50	10081179	0.40-1.20
	LKOC L 3AA1400C080A	32.00	14.00	12.00		0.8	3	3.50	10081180	0.40-1.20
	LKOC L 3AA1500C080A	32.00	15.00	12.00		0.8	3	4.00	10081181	0.40-1.20
	LKOC L 3AA1600C080A	32.00	16.00	12.00		0.8	3	4.00	10081182	0.40-1.20
	LKOC L 3AA1700C080A	32.00	17.00	12.00		0.8	3	4.50	10081183	0.40-1.20
	LKOC L 3AA1800C080A	32.00	18.00	12.00		0.8	3	5.00	10081184	0.40-1.20
	LKOC L 3AA1900C080A	32.00	19.00	12.00		0.8	3	5.50	10081185	0.40-1.20
	LKOC L 3AA2000C080A	32.00	20.00	12.00		0.8	3	5.50	10081186	0.40-1.20

Cutting inserts Leistriz OverCut for plastics

Blade type XS - 3 cutting edges - external cooling - uncoated - metric - right hand cutting

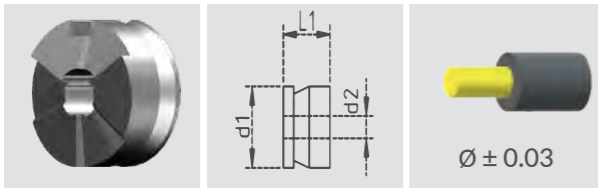


	Description	d1	d2	L1	Chamfer	Radius	Tooth	ap max.	Order-No.
without transition	LKOC XS 3GA0150A000A	12.00	1.50	10.00	--	--	3	1.00	10081187
	LKOC XS 3GA0200A000A	12.00	2.00	10.00	--	--	3	1.00	10081188
	LKOC XS 3GA0250A000A	12.00	2.50	10.00	--	--	3	1.50	10081189
	LKOC XS 3GA0300A000A	12.00	3.00	10.00	--	--	3	1.50	10081190
	LKOC XS 3GA0350A000A	12.00	3.50	10.00	--	--	3	2.00	10081191
	LKOC XS 3GA0400A000A	12.00	4.00	10.00	--	--	3	2.00	10081192
	LKOC XS 3GA0450A000A	12.00	4.50	10.00	--	--	3	2.50	10081193
	LKOC XS 3GA0500A000A	12.00	5.00	10.00	--	--	3	2.50	10081194
Radius transition	LKOC XS 3GA0150B020A	12.00	1.50	10.00		0.2	3	1.00	10081195
	LKOC XS 3GA0200B020A	12.00	2.00	10.00		0.2	3	1.00	10081196
	LKOC XS 3GA0250B040A	12.00	2.50	10.00		0.4	3	1.50	10081197
	LKOC XS 3GA0300B040A	12.00	3.00	10.00		0.4	3	1.50	10081198
	LKOC XS 3GA0350B040A	12.00	3.50	10.00		0.4	3	2.00	10081199
	LKOC XS 3GA0400B040A	12.00	4.00	10.00		0.4	3	2.00	10081200
	LKOC XS 3GA0450B040A	12.00	4.50	10.00		0.4	3	2.50	10081201
	LKOC XS 3GA0500B040A	12.00	5.00	10.00		0.4	3	2.50	10081202
Chamfer transition	LKOC XS 3GA0150C020A	12.00	1.50	10.00		0.2	3	1.00	10081203
	LKOC XS 3GA0200C020A	12.00	2.00	10.00		0.2	3	1.00	10081204
	LKOC XS 3GA0250C040A	12.00	2.50	10.00		0.4	3	1.50	10081205
	LKOC XS 3GA0300C040A	12.00	3.00	10.00		0.4	3	1.50	10081206
	LKOC XS 3GA0350C040A	12.00	3.50	10.00		0.4	3	2.00	10081207
	LKOC XS 3GA0400C040A	12.00	4.00	10.00		0.4	3	2.00	10081208
	LKOC XS 3GA0450C040A	12.00	4.50	10.00		0.4	3	2.50	10081209
	LKOC XS 3GA0500C040A	12.00	5.00	10.00		0.4	3	2.50	10081210

	N10	N11	N12	N13
	Vc in m/min	Vc in m/min	Vc in m/min	Vc in m/min
	40-350	40-300	40-250	40-200
	fn in mm	fn in mm	fn in mm	fn in mm
without transition	0.15-0.3	0.15-0.3	0.15-0.3	0.15-0.3
	0.15-0.3	0.15-0.3	0.15-0.3	0.15-0.3
	0.15-0.3	0.15-0.3	0.15-0.3	0.15-0.3
	0.30-0.45	0.30-0.45	0.30-0.45	0.30-0.45
	0.30-0.45	0.30-0.45	0.30-0.45	0.30-0.45
	0.30-0.45	0.30-0.45	0.30-0.45	0.30-0.45
	0.30-0.45	0.30-0.45	0.30-0.45	0.30-0.45
	0.30-0.45	0.30-0.45	0.30-0.45	0.30-0.45
Radius transition	0.15-0.3	0.15-0.3	0.15-0.3	0.15-0.3
	0.15-0.3	0.15-0.3	0.15-0.3	0.15-0.3
	0.15-0.3	0.15-0.3	0.15-0.3	0.15-0.3
	0.30-0.45	0.30-0.45	0.30-0.45	0.30-0.45
	0.30-0.45	0.30-0.45	0.30-0.45	0.30-0.45
	0.30-0.45	0.30-0.45	0.30-0.45	0.30-0.45
	0.30-0.45	0.30-0.45	0.30-0.45	0.30-0.45
	0.30-0.45	0.30-0.45	0.30-0.45	0.30-0.45
Chamfer transition	0.15-0.3	0.15-0.3	0.15-0.3	0.15-0.3
	0.15-0.3	0.15-0.3	0.15-0.3	0.15-0.3
	0.15-0.3	0.15-0.3	0.15-0.3	0.15-0.3
	0.30-0.45	0.30-0.45	0.30-0.45	0.30-0.45
	0.30-0.45	0.30-0.45	0.30-0.45	0.30-0.45
	0.30-0.45	0.30-0.45	0.30-0.45	0.30-0.45
	0.30-0.45	0.30-0.45	0.30-0.45	0.30-0.45
	0.30-0.45	0.30-0.45	0.30-0.45	0.30-0.45

Cutting inserts Leistriz OverCut for plastics

Blade type S - 3 cutting edges - external cooling - uncoated - metric - right hand cutting

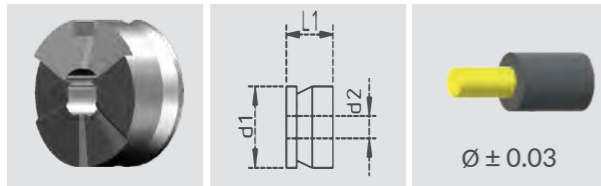


	Description	d1	d2	L1	Chamfer	Radius	Tooth	ap max.	Order-No.
without transition	LKOC S 3GA0450A000A	16.00	4.50	10.00	--	--	3	1.50	10081211
	LKOC S 3GA0500A000A	16.00	5.00	10.00	--	--	3	1.50	10081212
	LKOC S 3GA0550A000A	16.00	5.50	10.00	--	--	3	2.00	10081213
	LKOC S 3GA0600A000A	16.00	6.00	10.00	--	--	3	2.00	10081214
	LKOC S 3GA0650A000A	16.00	6.50	10.00	--	--	3	2.50	10081215
	LKOC S 3GA0700A000A	16.00	7.00	10.00	--	--	3	2.50	10081216
	LKOC S 3GA0750A000A	16.00	7.50	10.00	--	--	3	3.00	10081217
	LKOC S 3GA0800A000A	16.00	8.00	10.00	--	--	3	3.00	10081218
Radius transition	LKOC S 3GA0450B040A	16.00	4.50	10.00		0.4	3	1.50	10081219
	LKOC S 3GA0500B040A	16.00	5.00	10.00		0.4	3	1.50	10081220
	LKOC S 3GA0550B040A	16.00	5.50	10.00		0.4	3	2.00	10081221
	LKOC S 3GA0600B040A	16.00	6.00	10.00		0.4	3	2.00	10081222
	LKOC S 3GA0650B040A	16.00	6.50	10.00		0.4	3	2.50	10081223
	LKOC S 3GA0700B040A	16.00	7.00	10.00		0.4	3	2.50	10081224
	LKOC S 3GA0750B040A	16.00	7.50	10.00		0.4	3	3.00	10081225
	LKOC S 3GA0800B040A	16.00	8.00	10.00		0.4	3	3.00	10081226
Chamfer transition	LKOC S 3GA0450C040A	16.00	4.50	10.00		0.4	3	1.50	10081227
	LKOC S 3GA0500C040A	16.00	5.00	10.00		0.4	3	1.50	10081228
	LKOC S 3GA0550C040A	16.00	5.50	10.00		0.4	3	2.00	10081229
	LKOC S 3GA0600C040A	16.00	6.00	10.00		0.4	3	2.00	10081230
	LKOC S 3GA0650C040A	16.00	6.50	10.00		0.4	3	2.50	10081231
	LKOC S 3GA0700C040A	16.00	7.00	10.00		0.4	3	2.50	10081232
	LKOC S 3GA0750C040A	16.00	7.50	10.00		0.4	3	3.00	10081233
	LKOC S 3GA0800C040A	16.00	8.00	10.00		0.4	3	3.00	10081234

	N10	N11	N12	N13
	Vc in m/min	Vc in m/min	Vc in m/min	Vc in m/min
	40-350	40-300	40-250	40-200
	fn in mm	fn in mm	fn in mm	fn in mm
without transition	0.20-0.35	0.20-0.35	0.20-0.35	0.20-0.35
	0.20-0.35	0.20-0.35	0.20-0.35	0.20-0.35
	0.20-0.35	0.20-0.35	0.20-0.35	0.20-0.35
	0.30-0.45	0.30-0.45	0.30-0.45	0.30-0.45
	0.35-0.50	0.35-0.50	0.35-0.50	0.35-0.50
	0.35-0.50	0.35-0.50	0.35-0.50	0.35-0.50
	0.35-0.50	0.35-0.50	0.35-0.50	0.35-0.50
	0.35-0.50	0.35-0.50	0.35-0.50	0.35-0.50
Radius transition	0.20-0.35	0.20-0.35	0.20-0.35	0.20-0.35
	0.20-0.35	0.20-0.35	0.20-0.35	0.20-0.35
	0.20-0.35	0.20-0.35	0.20-0.35	0.20-0.35
	0.30-0.45	0.30-0.45	0.30-0.45	0.30-0.45
	0.35-0.50	0.35-0.50	0.35-0.50	0.35-0.50
	0.35-0.50	0.35-0.50	0.35-0.50	0.35-0.50
	0.35-0.50	0.35-0.50	0.35-0.50	0.35-0.50
	0.35-0.50	0.35-0.50	0.35-0.50	0.35-0.50
Chamfer transition	0.20-0.35	0.20-0.35	0.20-0.35	0.20-0.35
	0.20-0.35	0.20-0.35	0.20-0.35	0.20-0.35
	0.20-0.35	0.20-0.35	0.20-0.35	0.20-0.35
	0.30-0.45	0.30-0.45	0.30-0.45	0.30-0.45
	0.35-0.50	0.35-0.50	0.35-0.50	0.35-0.50
	0.35-0.50	0.35-0.50	0.35-0.50	0.35-0.50
	0.35-0.50	0.35-0.50	0.35-0.50	0.35-0.50
	0.35-0.50	0.35-0.50	0.35-0.50	0.35-0.50

Cutting inserts Leistriz OverCut for plastics

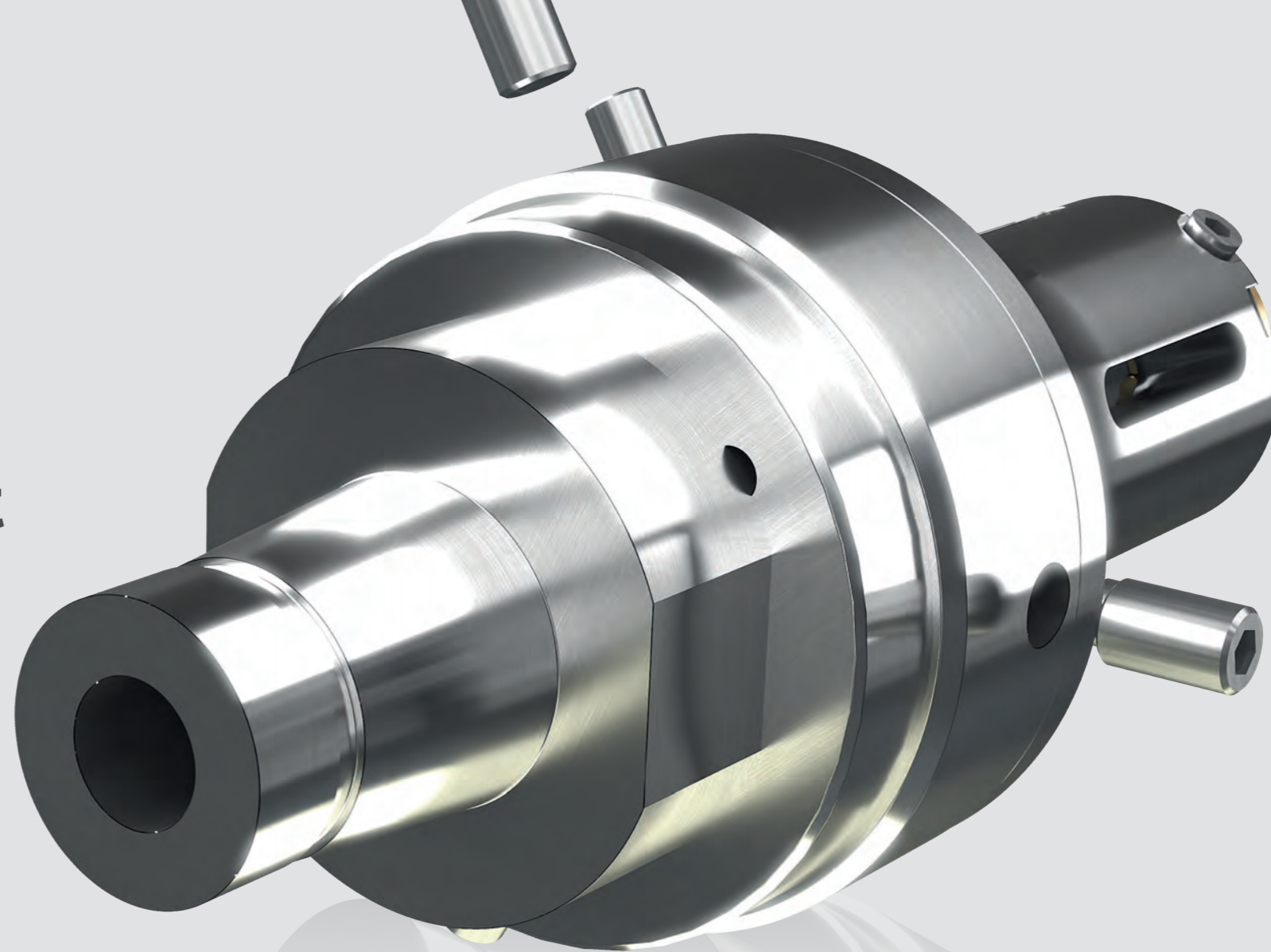
Blade type M - 3 cutting edges - external cooling - uncoated - metric - right hand cutting



	Description	d1	d2	L1	Chamfer	Radius	Tooth	ap max.	Order-No.
without transition	LKOC M 3GA0850A000A	20.00	8.50	10.00	--	--	3	2.50	10081235
	LKOC M 3GA0900A000A	20.00	9.00	10.00	--	--	3	2.50	10081236
	LKOC M 3GA0950A000A	20.00	9.50	10.00	--	--	3	2.50	10081237
	LKOC M 3GA1000A000A	20.00	10.00	10.00	--	--	3	3.00	10081238
	LKOC M 3GA1050A000A	20.00	10.50	10.00	--	--	3	3.00	10081239
	LKOC M 3GA1100A000A	20.00	11.00	10.00	--	--	3	3.00	10081240
	LKOC M 3GA1150A000A	20.00	11.50	10.00	--	--	3	4.00	10081241
	LKOC M 3GA1200A000A	20.00	12.00	10.00	--	--	3	4.00	10081242
Radius transition	LKOC S 3GA0450B080A	20.00	8.50	10.00		0.8	3	2.50	10081243
	LKOC S 3GA0500B080A	20.00	9.00	10.00		0.8	3	2.50	10081244
	LKOC S 3GA0550B080A	20.00	9.50	10.00		0.8	3	2.50	10081245
	LKOC S 3GA0600B080A	20.00	10.00	10.00		0.8	3	3.00	10081246
	LKOC S 3GA0650B080A	20.00	10.50	10.00		0.8	3	3.00	10081247
	LKOC S 3GA0700B080A	20.00	11.00	10.00		0.8	3	3.00	10081248
	LKOC S 3GA0750B080A	20.00	11.50	10.00		0.8	3	4.00	10081249
	LKOC S 3GA0800B080A	20.00	12.00	10.00		0.8	3	4.00	10081250
Chamfer transition	LKOC S 3GA0450C080A	20.00	8.50	10.00		0.8	3	2.50	10081251
	LKOC S 3GA0500C080A	20.00	9.00	10.00		0.8	3	2.50	10081252
	LKOC S 3GA0550C080A	20.00	9.50	10.00		0.8	3	2.50	10081253
	LKOC S 3GA0600C080A	20.00	10.00	10.00		0.8	3	3.00	10081254
	LKOC S 3GA0650C080A	20.00	10.50	10.00		0.8	3	3.00	10081255
	LKOC S 3GA0700C080A	20.00	11.00	10.00		0.8	3	3.00	10081256
	LKOC S 3GA0750C080A	20.00	11.50	10.00		0.8	3	4.00	10081257
	LKOC S 3GA0800C080A	20.00	12.00	10.00		0.8	3	4.00	10081258

	N10	N11	N12	N13
	Vc in m/min	Vc in m/min	Vc in m/min	Vc in m/min
	40-350	40-300	40-250	40-200
	fn in mm	fn in mm	fn in mm	fn in mm
without transition	0.20-0.50	0.20-0.50	0.20-0.50	0.20-0.50
	0.20-0.50	0.20-0.50	0.20-0.50	0.20-0.50
	0.20-0.50	0.20-0.50	0.20-0.50	0.20-0.50
	0.30-0.50	0.30-0.50	0.30-0.50	0.30-0.50
	0.30-0.50	0.30-0.50	0.30-0.50	0.30-0.50
	0.35-0.60	0.35-0.60	0.35-0.60	0.35-0.60
	0.35-0.60	0.35-0.60	0.35-0.60	0.35-0.60
	0.35-0.60	0.35-0.60	0.35-0.60	0.35-0.60
Radius transition	0.20-0.50	0.20-0.50	0.20-0.50	0.20-0.50
	0.20-0.50	0.20-0.50	0.20-0.50	0.20-0.50
	0.20-0.50	0.20-0.50	0.20-0.50	0.20-0.50
	0.30-0.50	0.30-0.50	0.30-0.50	0.30-0.50
	0.30-0.50	0.30-0.50	0.30-0.50	0.30-0.50
	0.35-0.60	0.35-0.60	0.35-0.60	0.35-0.60
	0.35-0.60	0.35-0.60	0.35-0.60	0.35-0.60
	0.35-0.60	0.35-0.60	0.35-0.60	0.35-0.60
Chamfer transition	0.20-0.50	0.20-0.50	0.20-0.50	0.20-0.50
	0.20-0.50	0.20-0.50	0.20-0.50	0.20-0.50
	0.20-0.50	0.20-0.50	0.20-0.50	0.20-0.50
	0.30-0.50	0.30-0.50	0.30-0.50	0.30-0.50
	0.30-0.50	0.30-0.50	0.30-0.50	0.30-0.50
	0.35-0.60	0.35-0.60	0.35-0.60	0.35-0.60
	0.35-0.60	0.35-0.60	0.35-0.60	0.35-0.60
	0.35-0.60	0.35-0.60	0.35-0.60	0.35-0.60

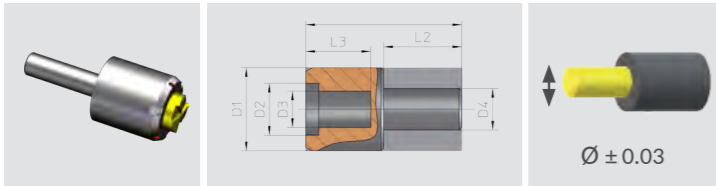
Leistritz OverCut Holder.



Tool type	Size	Length Workpiece	Connection	Connection size			Cooling		Concentricity	Stages	End machining
				0	1	6	B	A			
LHOC	S	A	A								
Leistritz OverCut Holder	Ø Range XS 1.5-5.0mm S 3.0-8.0mm M 3.0-12.0mm L 6.0-20.0mm	maximal A 60mm B 90mm C 130mm D 210mm	A cylindrical B Steep taper (ISO 7388-1)* C BT (ISO 7388-2)* D HSK-A (DIN 69893-1)* E HSK-C (DIN 69893-1) F HSK-E (DIN 69893-5) G Polygon shaft taper (ISO 26623)* H Weldon (DIN 1835-B)* I KM (manufacturer standard)* J BIG (manufacturer standard)* K VDI (ISO 10889)* L Variomatic* M LEA (Leistritz adjustment adapter)* N Machine specific* O ABS* P 4 Edges DIN 69880 Q Steep taper (DIN2080) R Special Connection*	Example: Cylinder Ø 16 mm	Transfer A central B external*	on Workpiece A without B external C internal D external + internal	A adjustable B non-adjustable	1 2* 3*	A without B with*		

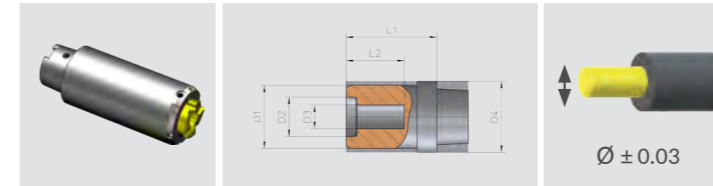
* Only available in conjunction with a custom fitting

Leistritz OverCut Holder cylindrical external cooling - single stage - without end machining - metric



	Description	D1	D2	D3	D4	L1	L2	L3	Order-No.
Ø16mm	LHOC XS AA016ABB1A	24.00	12.00	7.00	16.00	70.00	48	70	10081283
	LHOC S AA016ABB1A	28.00	16.00	10.00	16.00	80.00	48	80	10081284
	LHOC M AA016ABB1A	32.00	20.00	14.00	16.00	90.00	48	40	10081285
	LHOC L AA016ABB1A	45.00	32.00	22.00	16.00	100.00	48	45	10081286
	LHOC XS AA020ABB1A	24.00	12.00	7.00	20.00	75.00	50	75	10081287
Ø20mm	LHOC S AA020ABB1A	28.00	16.00	10.00	20.00	85.00	50	85	10081288
	LHOC M AA020ABB1A	32.00	20.00	14.00	20.00	95.00	50	95	10081289
	LHOC L AA020ABB1A	45.00	32.00	22.00	20.00	105.00	50	50	10081290
	LHOC XS AA032ABB1A	24.00	12.00	7.00	32.00	80.00	60	80	10081291
Ø32mm	LHOC S AA032ABB1A	28.00	16.00	10.00	32.00	90.00	60	90	10081292
	LHOC M AA032ABB1A	32.00	20.00	14.00	32.00	100.00	60	100	10081293
	LHOC L AA032ABB1A	45.00	32.00	22.00	32.00	120.00	60	120	10081294

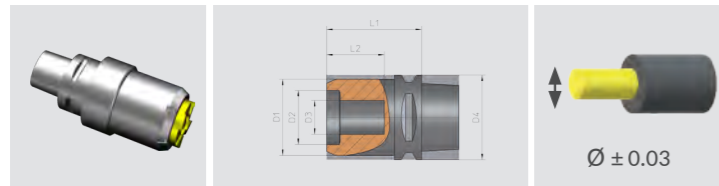
Leistritz OverCut Holder HSK-C (DIN 69893-1) HSK-E (DIN 69893-5) external cooling - single stage - without end machining - metric



	Description	D1	D2	D3	D4	L1	L2	Order-No.
HSK-C 32	LHOC XS AE032ABB1A	24.00	12.00	7.00	32.00	60.00	50	10081295
	LHOC S AE032ABB1A	28.00	16.00	10.00	32.00	80.00	70	10081296
	LHOC M AE032ABB1A	32.00	20.00	14.00	32.00	100.00	90	10081297
	LHOC L AE032ABB1A	45.00	32.00	22.00	32.00	140.00	120	10081298
HSK-C 40	LHOC XS AE040ABB1A	24.00	12.00	7.00	40.00	70.00	60	10081299
	LHOC S AE040ABB1A	28.00	16.00	10.00	40.00	90.00	80	10081300
	LHOC M AE040ABB1A	32.00	20.00	14.00	40.00	110.00	100	10081301
	LHOC L AE040ABB1A	45.00	32.00	22.00	40.00	150.00	130	10081302
HSK-C 50	LHOC XS AE050ABB1A	24.00	12.00	7.00	50.00	80.00	70	10081337
	LHOC S AE050ABB1A	28.00	16.00	10.00	50.00	100.00	90	10081338
	LHOC M AE050ABB1A	32.00	20.00	14.00	50.00	120.00	110	10081339
	LHOC L AE050ABB1A	45.00	32.00	22.00	50.00	160.00	140	10081340
HSK-E 32	LHOC XS AF032ABB1A	24.00	12.00	7.00	32.00	60.00	50	10081341
	LHOC S AF032ABB1A	28.00	16.00	10.00	32.00	80.00	70	10081342
	LHOC M AF032ABB1A	32.00	20.00	14.00	32.00	100.00	90	10081343
	LHOC L AF032ABB1A	45.00	32.00	22.00	32.00	140.00	120	10081344
HSK-E 40	LHOC XS AF040ABB1A	24.00	12.00	7.00	40.00	70.00	60	10081345
	LHOC S AF040ABB1A	28.00	16.00	10.00	40.00	90.00	80	10081346
	LHOC M AF040ABB1A	32.00	20.00	14.00	40.00	110.00	100	10081347
	LHOC L AF040ABB1A	45.00	32.00	22.00	40.00	150.00	130	10081348

Leistritz OverCut Holder Polygon shaft taper ISO 26623

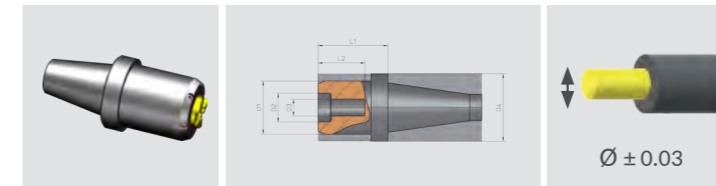
external cooling - single stage - without end machining - metric



	Description	D1	D2	D3	D4	L1	L2	Order-No.
PSK 32	LHOC XS AE032ABB1A	24.00	12.00	7.00	32.00	60.00	50	10081349
	LHOC S AE032ABB1A	28.00	16.00	10.00	32.00	80.00	70	10081350
	LHOC M AE032ABB1A	32.00	20.00	14.00	32.00	100.00	90	10081351
	LHOC L AE032ABB1A	45.00	32.00	22.00	32.00	140.00	120	10081352
PSK 40	LHOC XS AE040ABB1A	24.00	12.00	7.00	40.00	70.00	60	10081353
	LHOC S AE040ABB1A	28.00	16.00	10.00	40.00	90.00	80	10081354
	LHOC M AE040ABB1A	32.00	20.00	14.00	40.00	110.00	100	10081355
	LHOC L AE040ABB1A	45.00	32.00	22.00	40.00	150.00	130	10081356
PSK 50	LHOC XS AE050ABB1A	24.00	12.00	7.00	50.00	80.00	70	10081357
	LHOC S AE050ABB1A	28.00	16.00	10.00	50.00	100.00	90	10081358
	LHOC M AE050ABB1A	32.00	20.00	14.00	50.00	120.00	110	10081359
	LHOC L AE050ABB1A	45.00	32.00	22.00	50.00	160.00	140	10081360

Leistritz OverCut Holder SK (DIN 2080)

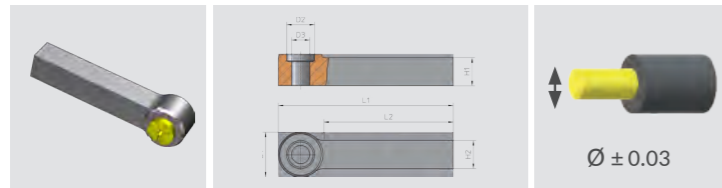
external cooling - single stage - without end machining - metric



	Description	D1	D2	D3	D4	L1	L2	Order-No.
SK30	LHOC XS AB030ABB1A	24.00	12.00	7.00	50.00	60.00	60	10081361
	LHOC S AB030ABB1A	28.00	16.00	10.00	50.00	80.00	80	10081362
	LHOC M AB030ABB1A	32.00	20.00	14.00	50.00	100.00	100	10081363
	LHOC L AB030ABB1A	45.00	32.00	22.00	50.00	140.00	140	10081364
SK 40	LHOC XS AB040ABB1A	24.00	12.00	7.00	63.00	70.00	70	10081365
	LHOC S AB040ABB1A	28.00	16.00	10.00	63.00	90.00	90	10081366
	LHOC M AB040ABB1A	32.00	20.00	14.00	63.00	110.00	110	10081367
	LHOC L AB040ABB1A	45.00	32.00	22.00	63.00	150.00	150	10081368
SK 50	LHOC XS AB050ABB1A	24.00	12.00	7.00	97.50	80.00	80	10081369
	LHOC S AB050ABB1A	28.00	16.00	10.00	97.50	100.00	100	10081370
	LHOC M AB050ABB1A	32.00	20.00	14.00	97.50	120.00	120	10081371
	LHOC L AB050ABB1A	45.00	32.00	22.00	97.50	160.00	160	10081372

Leistritz OverCut 4 Edges

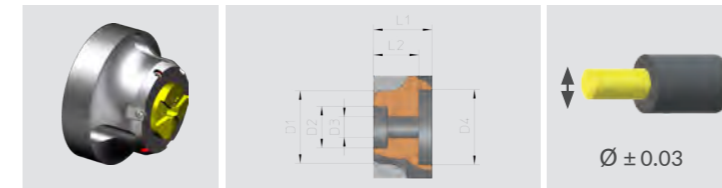
external cooling - single stage - without end machining - metric



	Description	D1	D2	D3	L1	L2	H1	H2	Order-No.
12x16mm	LHOC XS AP016ABB1A	24.00	12.00	7.00	121.00	97.00	12	16	10081373
16x20mm	LHOC XS AP016ABB1A	24.00	12.00	7.00	121.00	92.00	16	20	10081374
	LHOC S AP016ABB1A	28.00	16.00	10.00	121.00	92.00	16	20	10081375
	LHOC M AP016ABB1A	32.00	20.00	14.00	121.00	92.00	16	20	10081376
20x25mm	LHOC XS AP020ABB1A	24.00	12.00	7.00	121.00	92.00	20	25	10081377
	LHOC S AP020ABB1A	28.00	16.00	10.00	121.00	92.00	20	25	10081378
	LHOC M AP020ABB1A	32.00	20.00	14.00	121.00	92.00	20	25	10081379
	LHOC L AP020ABB1A	45.00	32.00	22.00	121.00	92.00	20	25	10081380
25x32mm	LHOC XS AP025ABB1A	24.00	12.00	7.00	121.00	92.00	25	32	10081381
	LHOC S AP025ABB1A	28.00	16.00	10.00	121.00	92.00	25	32	10081382
	LHOC M AP025ABB1A	32.00	20.00	14.00	121.00	92.00	25	32	10081383
32x32mm	LHOC L AP032ABB1A	45.00	32.00	22.00	121.00	92.00	32	32	10081384

Leistritz OverCut Machine specific

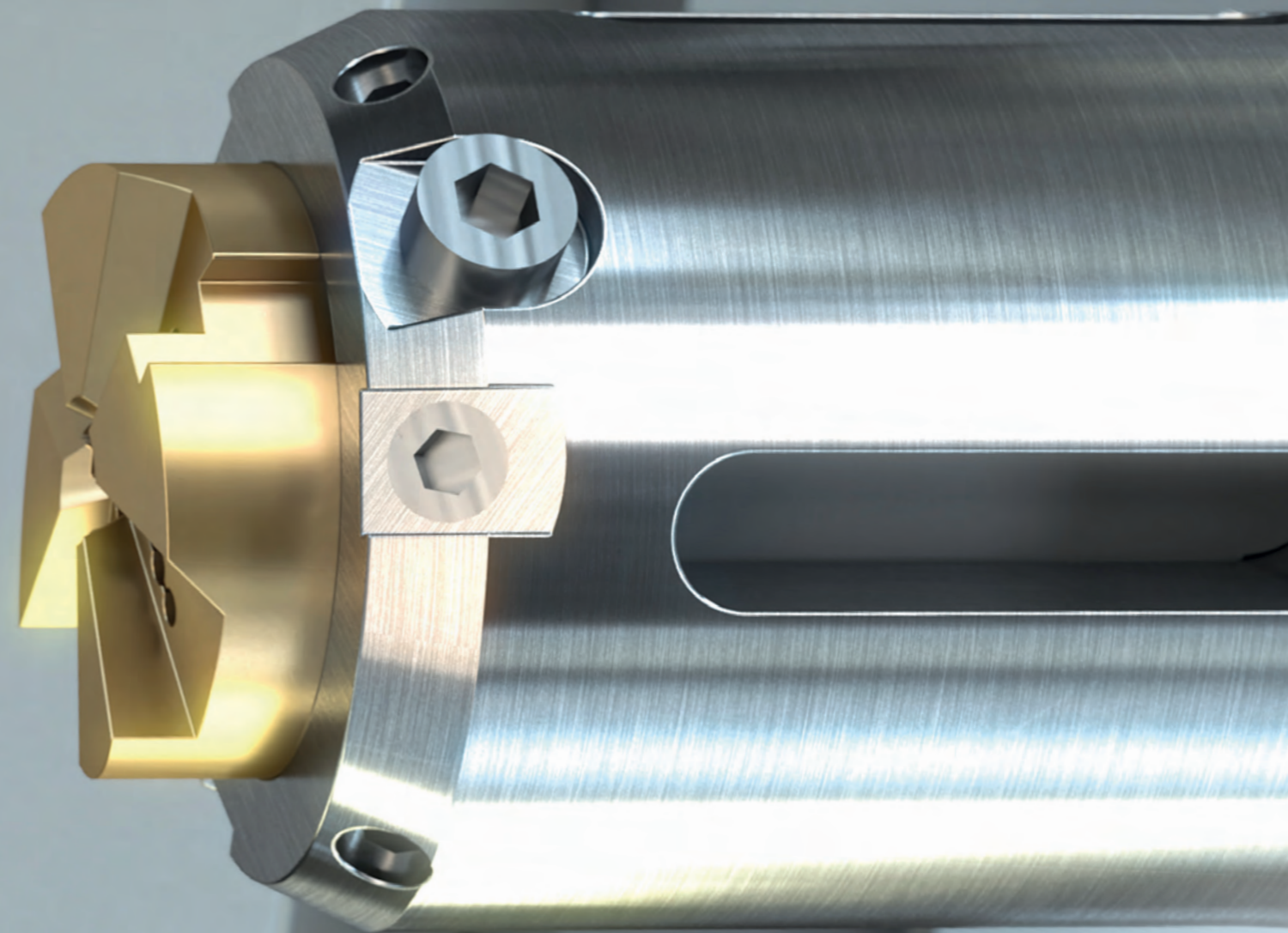
external cooling - single stage - without end machining - metric



	Description	D1	D2	D3	D4	L1	L2	L3	Order-No.
29x25mm	LHOC XS AA016ABB1A	24.00	16.00	7.00	29 Flansch	25.20	48	20	10081986
	When Length / ø different	Only available in conjunction with a custom fitting							

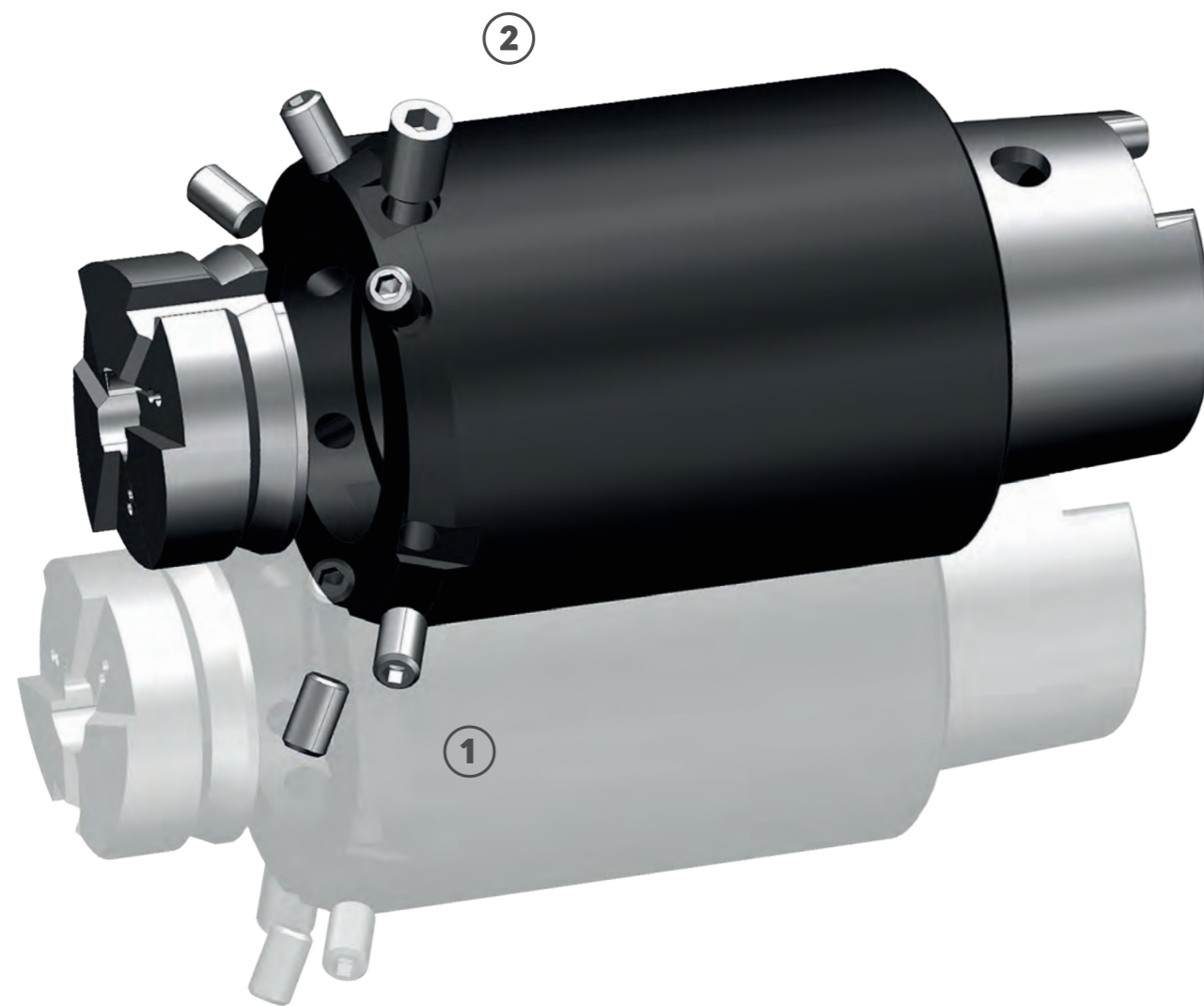
Leistriz OverCut.



Technical informations.



Leistriz OverCut

Installation and Handling

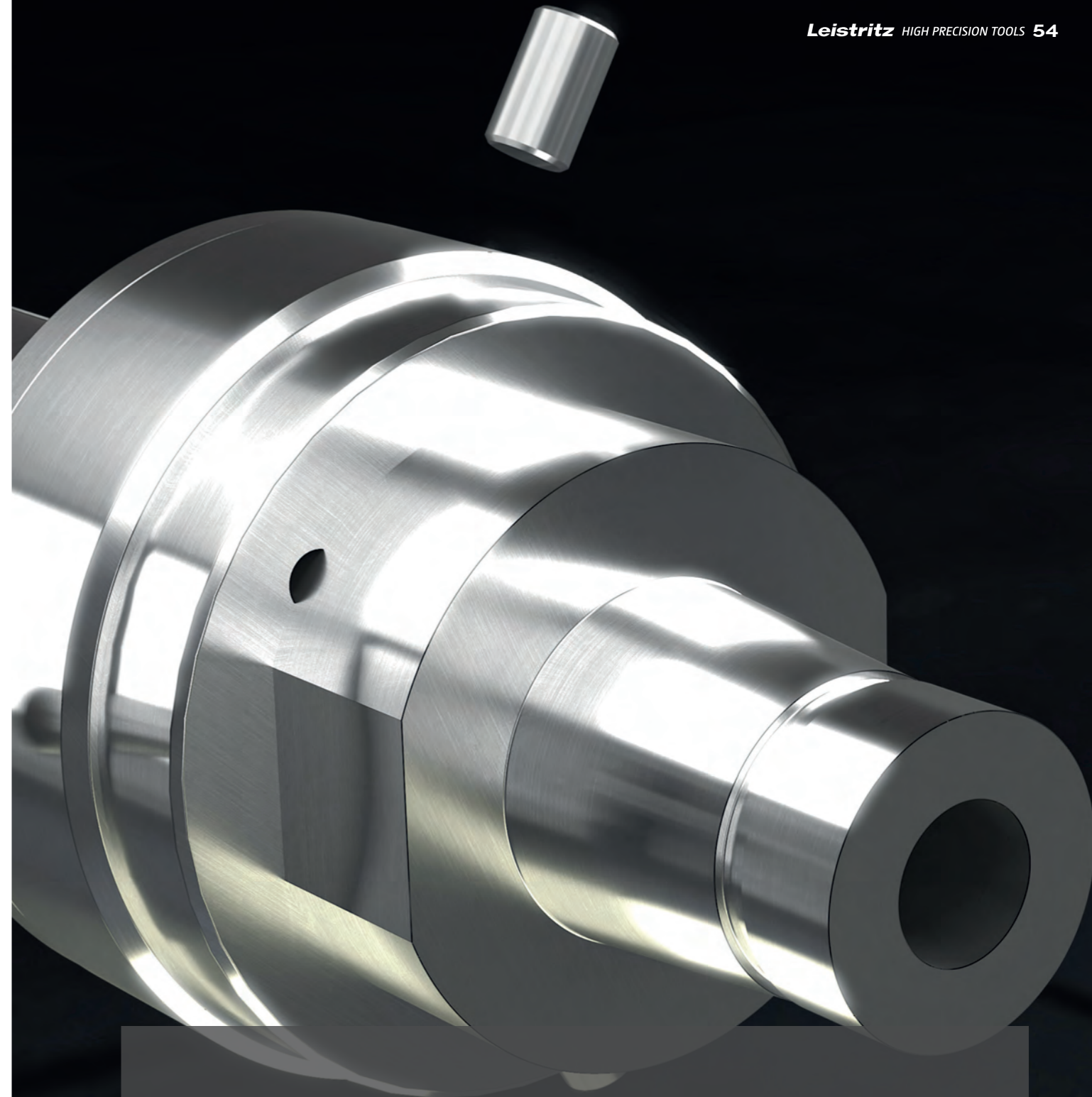
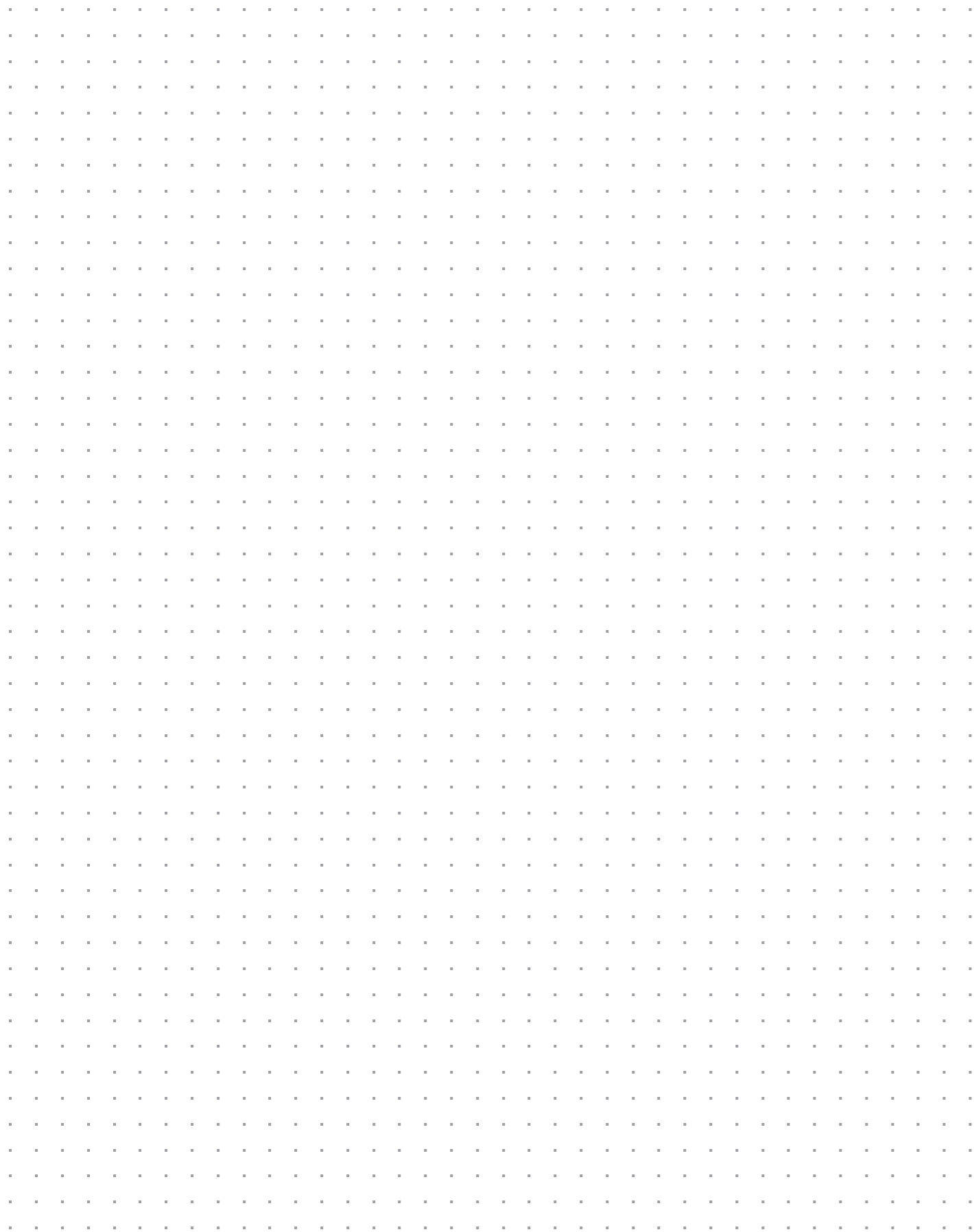


Pos.	No./Holder	Torque		Order-No.
①	6	0.45 Nm		7761920
②	1	Adhesive lock		7760040

Please use torque wrench to fasten the screw.

		Material (based on ISO)			HB	HRC	
P	unalloyed steel	P01	C ≤ 0.55%	not tempered	<700N/mm ²	100-190	--
		P02	C ≤ 0.55%	tempered	<700N/mm ²	210	--
		P03	C ≤ 0.55%	tempered	>700N/mm ²	300	32
		P04	free-cutting steel	--	>700N/mm ²	220	--
	mild steel	P05	not tempered		<700N/mm ²	175	--
		P06	tempered		>700N/mm ²	285-430	30-46
	high alloy steel	P07	not hardened		<700N/mm ²	200	--
		P08	hardened and heat treated		>700N/mm ²	300-380	32-41
	stainless steel	P09	heat treated		<700N/mm ²	200	--
		P10	tempered		>700N/mm ²	330	35
M	stainless steel	M01	austenitic/ferritic		<700N/mm ²	200	--
		M02	austenitic/ferritic		>700N/mm ²	300	32
		M03	austenitic/ferritic Duplex		<800N/mm ²	230	--
K	cast iron / grey cast iron	K01	ferritic, low rigidity		<400N/mm ²	180-200	--
		K02	perritic/austenitic		<800N/mm ²	250	25
	ductile cast iron	K03	ferritic		<400N/mm ²	160	--
		K04	perritic		<800N/mm ²	260	27
	nodular cast irgon	K05	vermicular		<500N/mm ²	230	--
		K06	vermicular		>500N/mm ²	200-XXX	--
N	aluminium forged casting	N01	<3% Si. alloyed and unalloyed		<250N/mm ²	--	--
		N02	≤12% Si. no thermosetting		≤260N/mm ²	80	--
		N03	≤12% Si. thermosetting		<320N/mm ²	90	--
		N04	>12% Si		<450N/mm ²	125	--
	cooper / cooper based alloy	N05	unalloyed		<350N/mm ²	100	--
		N06	brass, bronze		<320N/mm ²	90	--
		N07	Cu-alloy		<1000N/mm ²	350	38
		N08	lead free brass		<350N/mm ²	105	--
	magnesium alloy	N09			<320N/mm ²	90	--
	thermoplastic	N10			--	--	--
	thermoset	N11			--	--	--
	thermoplastic	N12	fiber reinforced		--	--	--
	thermoset	N13	fiber reinforced		--	--	--
	AFK	N14			--	--	--
	thermoplastic	N15	GFK/CFK		--	--	--
	thermoset	N16	GFK/CFK		--	--	--

■ Notes



SPECIAL REQUEST?

Is your application not listed in the catalog? Design your tool holder and send us your request to bestellmalwerkzeuge@leistritz.com



Leistriz Production Technology



Headquarters

Leistriz Produktionstechnik GmbH
Leistrizstr. 1-11
92714 Pleystein
Germany
T: +49 9654 89-0
F: +49 9654 89-812
E: bestellmalwerkzeuge@leistriz.com

Technology & Service locations

Leistriz Advanced Technologies Corp.
Allendale, USA

Leistriz Machinery (Taicang) Co., Ltd.
Shanghai, China

Leistriz Machinery (Taicang) Co., Ltd.
Jiangsu, China

Leistriz SEA Pte. Ltd.
Singapur

